



# Cereals market situation

Meeting of the Expert Group for Agricultural Markets –  
Subgroup Arable Crops and Olive Oil

*27 July 2023*

# 2022/2023 marketing year

# EU27 2022/2023 Area

(million ha)

	2021/22	2022/23		
	Estimate	June Forecast	July Forecast	vs. 2021/22 (%)
Soft wheat	21.8	21.9	21.9	0.4
Durum wheat	2.2	2.2	2.2	-1.0
Barley	10.3	10.3	10.3	0.5
Maize	9.2	8.9	8.9	-4.3
Rye	1.9	1.7	1.7	-9.2
Oats	2.6	2.4	2.4	-7.5
<b>Total</b>	<b>52.1</b>	<b>51.0</b>	<b>51.0</b>	<b>-2.0</b>

Source: DG AGRI - E4

# EU27 2022/2023 Production

(million tonnes)

	2021/22	2022/23		
	Estimate	June Forecast	July Forecast	vs. 2021/22 (%)
Soft wheat	129.0	125.7	125.7	-2.5
Durum wheat	8.0	7.1	7.1	-11.4
Barley	51.4	51.5	51.5	0.1
Maize	73.2	52.1	52.1	-28.9
Rye	7.8	7.3	7.3	-6.7
Oats	7.4	7.4	7.4	0.0
<b>Total</b>	<b>292.6</b>	<b>265.3</b>	<b>265.3</b>	<b>-9.3</b>

Source: DG AGRI - E4

# EU 2022/2023 Usable Production: comparison with other forecasters

*(million tonnes)*

	EC DG AGRI 27-July	Stratégie Grains 13-July	COCERAL 12-June	COPA COGECA 09-September
Soft Wheat	125.7	125.1	126.9	125.7
Durum Wheat	7.1	7.1	7.2	7.4
Barley	51.5	51.3	51.9	51.1
Maize	52.1	52.1	52.3	55.0
Rye	7.3	7.5	7.5	8.0
<b>Total Cereals</b>	<b>265.3</b>	<b>264.9</b>	<b>266.8</b>	<b>269.1</b>

# EU 2022/2023 Cereals Balance Sheet

(thousand metric tonnes)

last updated: 27/07/2023

	2022/23 fc.									
	Common wheat	Barley	Durum wheat	Maize	Rye	Sorghum	Oats	Triticale	Others	TOTAL CEREALS
<b>Beginning stocks</b>	15 444	4 112	1 218	20 170	1 314	1 041	1 282	2 016	410	47 007
Usable production	125 749	51 492	7 067	52 053	7 252	527	7 384	11 163	2 633	265 320
Area (thousand ha)	21 896	10 324	2 192	8 852	1 741	134	2 362	2 577	970	51 048
Yield (tonnes/ha)	6	5	3	6	4	4	3	4	3	5
Imports (from third countries)	9 600	2 100	2 100	25 800	137	35	180	2	164	40 117
<b>Total supply</b>	<b>150 794</b>	<b>57 703</b>	<b>10 385</b>	<b>98 022</b>	<b>8 704</b>	<b>1 604</b>	<b>8 846</b>	<b>13 181</b>	<b>3 206</b>	<b>352 444</b>
Total domestic use	98 861	42 003	9 192	74 861	7 568	1 106	7 420	11 564	2 845	255 420
Human consumption	41 606	364	8 155	4 747	3 072	156	1 111	52	23	59 286
Seed	4 600	2 131	400	402	300	29	350	500	270	8 981
Industrial uses	8 800	6 700	95	11 400	1 500		101	445	170	29 210
<i>of which bioethanol/biofuel</i>	<i>2 800</i>	<i>437</i>		<i>6 300</i>	<i>900</i>			<i>344</i>	<i>14</i>	<i>10 795</i>
Animal feed	43 100	32 500	500	58 000	2 652	918	5 814	10 500	2 366	156 350
Losses	754	309	42	312	44	3	44	67	16	1 592
Exports (to third countries)	32 000	9 850	917	4 000	160	16	100	5	20	47 067
<b>Total use</b>	<b>130 861</b>	<b>51 853</b>	<b>10 109</b>	<b>78 861</b>	<b>7 728</b>	<b>1 122</b>	<b>7 520</b>	<b>11 568</b>	<b>2 864</b>	<b>302 487</b>
<b>Ending stocks**</b>	<b>19 933</b>	<b>5 850</b>	<b>276</b>	<b>19 161</b>	<b>976</b>	<b>482</b>	<b>1 326</b>	<b>1 613</b>	<b>341</b>	<b>49 957</b>
<b>Change in stocks**</b>	<b>4 489</b>	<b>1 738</b>	<b>-942</b>	<b>-1 009</b>	<b>-338</b>	<b>-559</b>	<b>43</b>	<b>-404</b>	<b>-68</b>	<b>2 950</b>

\* Marketing year: from July to June

\*\* At the end of the marketing year

# 2023/2024 marketing year

# EU27 2023/2024 Area

(million ha)

	2022/23	2023/24		
	Forecast	June Projection	July Projection	vs. 2022/23 (%)
Soft wheat	21.9	21.9	21.9	0.1
Durum wheat	2.2	2.1	2.1	-2.3
Barley	10.3	10.4	10.4	0.3
Maize	8.9	8.4	8.5	-4.5
Rye	1.7	1.8	1.8	4.5
Oats	2.4	2.3	2.3	-3.4
<b>Total</b>	<b>51.0</b>	<b>50.6</b>	<b>50.6</b>	<b>-0.8</b>

Source: DG AGRI - E4



# EU27 2023/2024 Production

(million tonnes)

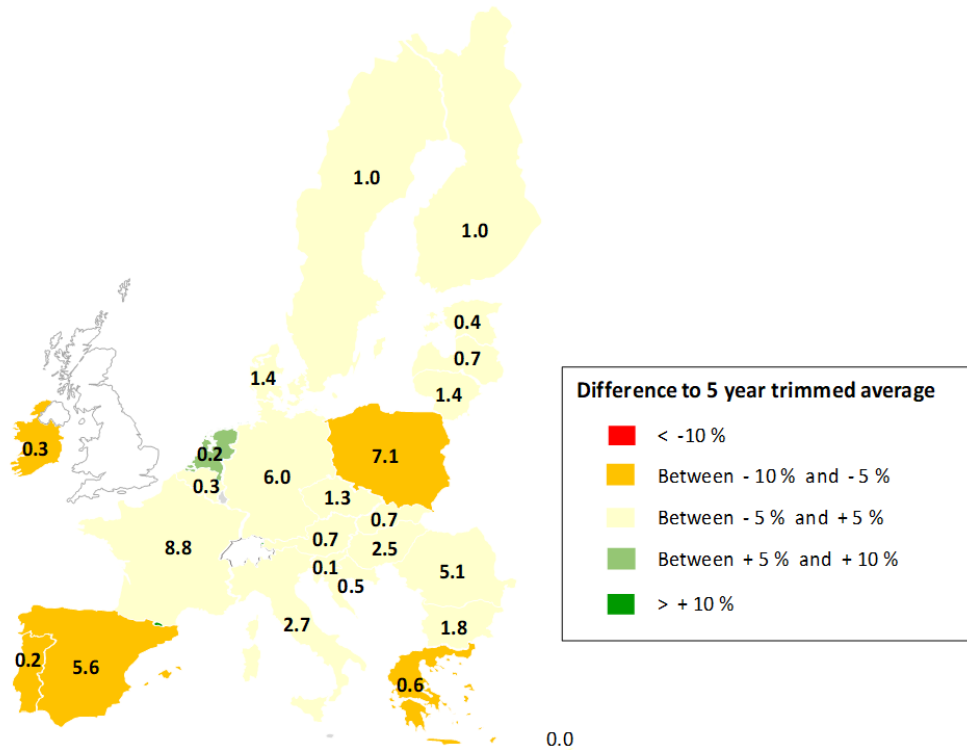
	2022/23 Estimate	2023/24			
		June Projection	July Projection	vs. 2022/23 (%)	vs. 5-year av. (%)
Soft wheat	125.7	128.9	126.4	0.5	1.7
Durum wheat	7.1	7.2	7.2	1.8	-5.0
Barley	51.5	49.7	48.7	-5.4	-6.8
Maize	52.1	63.7	63.0	21.0	-8.5
Rye	7.3	7.5	7.3	0.8	-5.9
Oats	7.4	6.9	6.9	-6.4	-4.1
<b>Total</b>	<b>265.3</b>	<b>278.1</b>	<b>273.6</b>	<b>3.1</b>	<b>-2.5</b>

Source: DG AGRI - E4

# Total cereals 2023/24 - area

June 2023 Projection

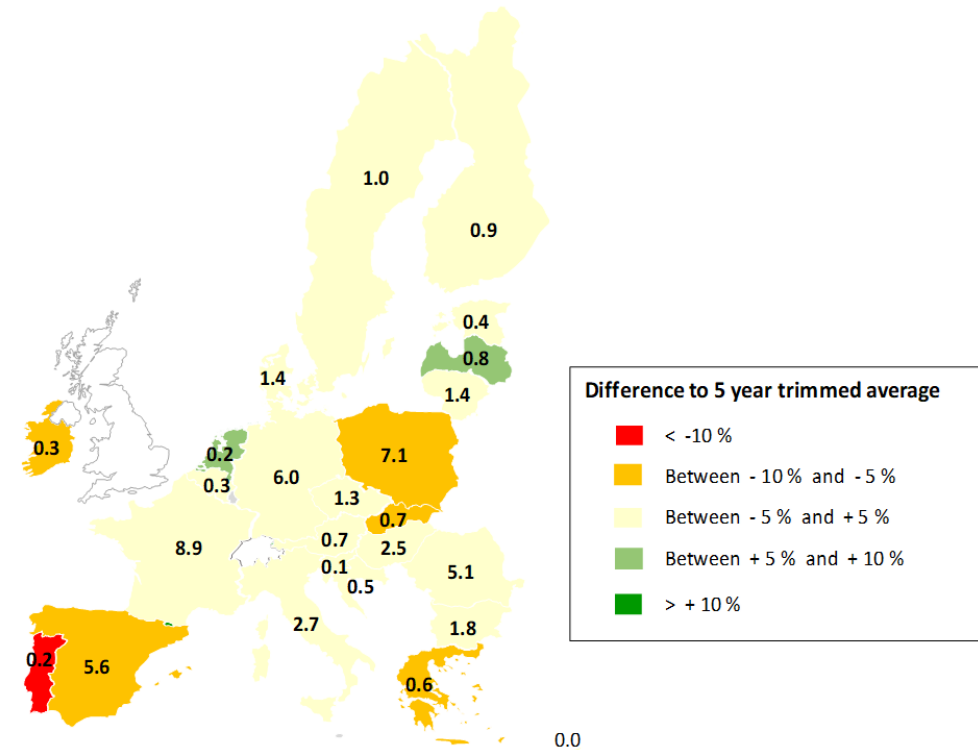
Total cereals area - 2023 projection (million hectares)



EU area: 50.6 million hectares - difference to 5 year trimmed average: -2.6%

July 2023 Projection

Total cereals area - 2023 projection (million hectares)

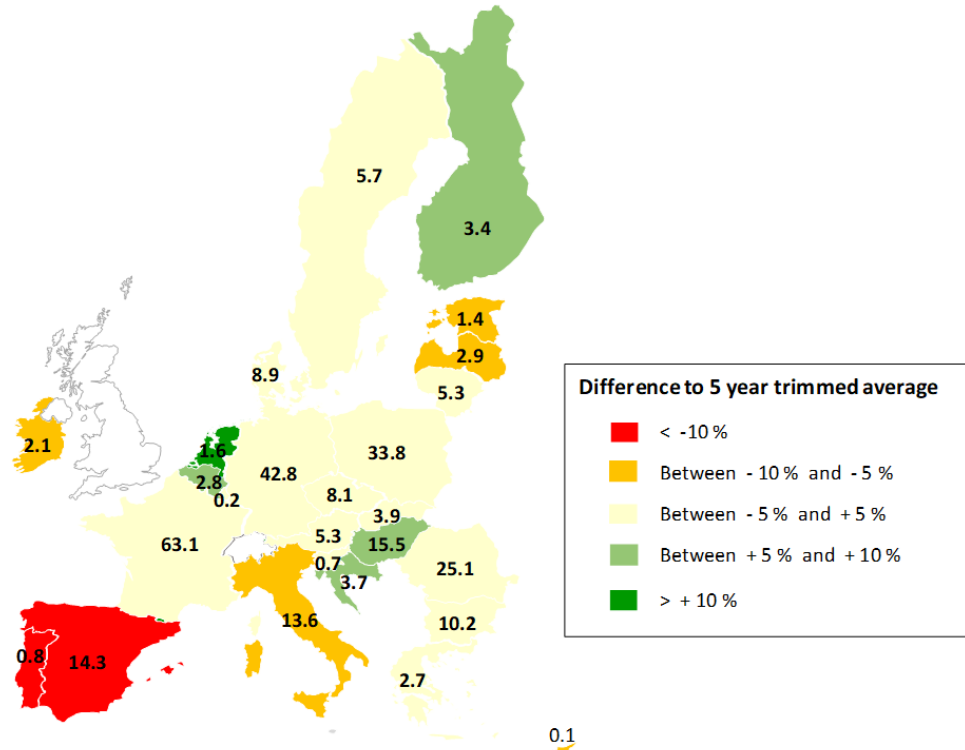


EU area: 50.6 million hectares - difference to 5 year trimmed average: -2.5%

# Total cereals 2023/24 - production

June 2023 Projection

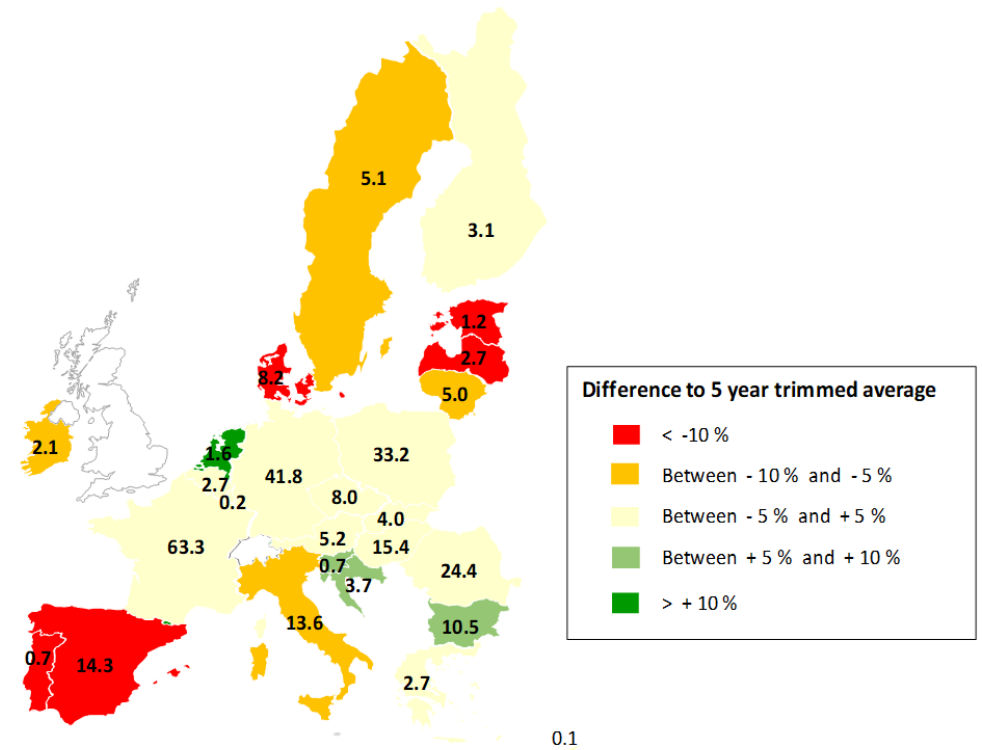
Total cereals production - 2023 projection (million tonnes)



EU production: 278.1 million tonnes - difference to 5 year trimmed average: -1%

July 2023 Projection

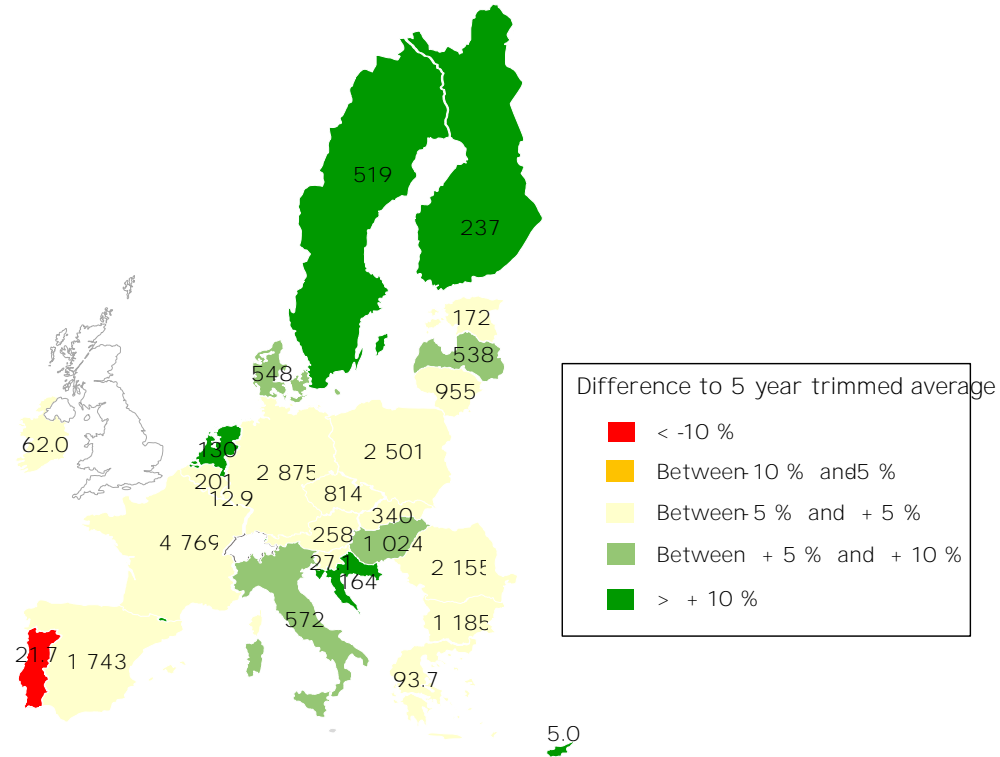
Total cereals production - 2023 projection (million tonnes)



EU production: 273.6 million tonnes - difference to 5 year trimmed average: -2.5%

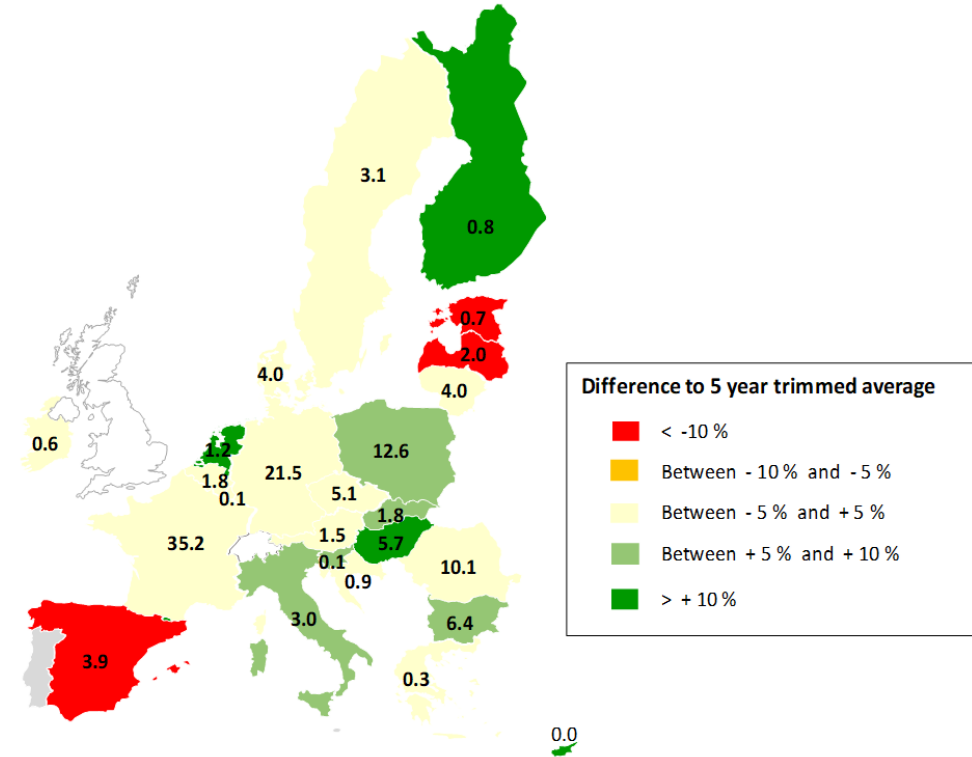
# Soft wheat 2023/24

Soft wheat area - 2023 projection (thousand hectares)



EU area: 21 922 thousand hectares - difference to 5 year trimmed average: +1.2%

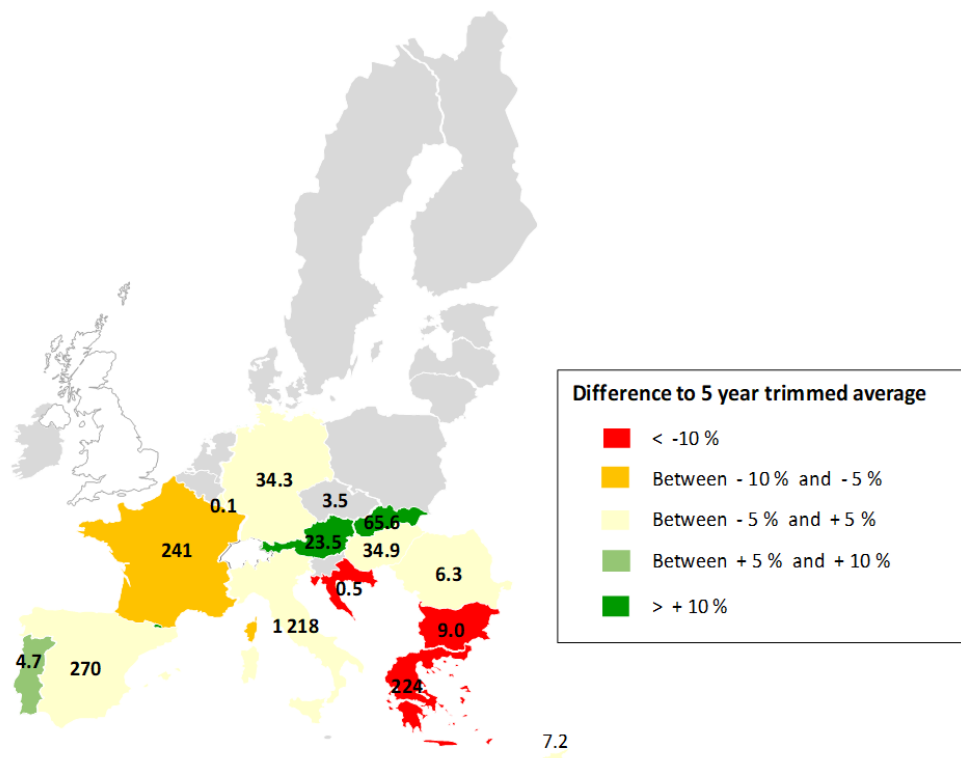
Soft wheat production - 2023 projection (million tonnes)



EU production: 126.4 million tonnes - difference to 5 year trimmed average: +1.7%

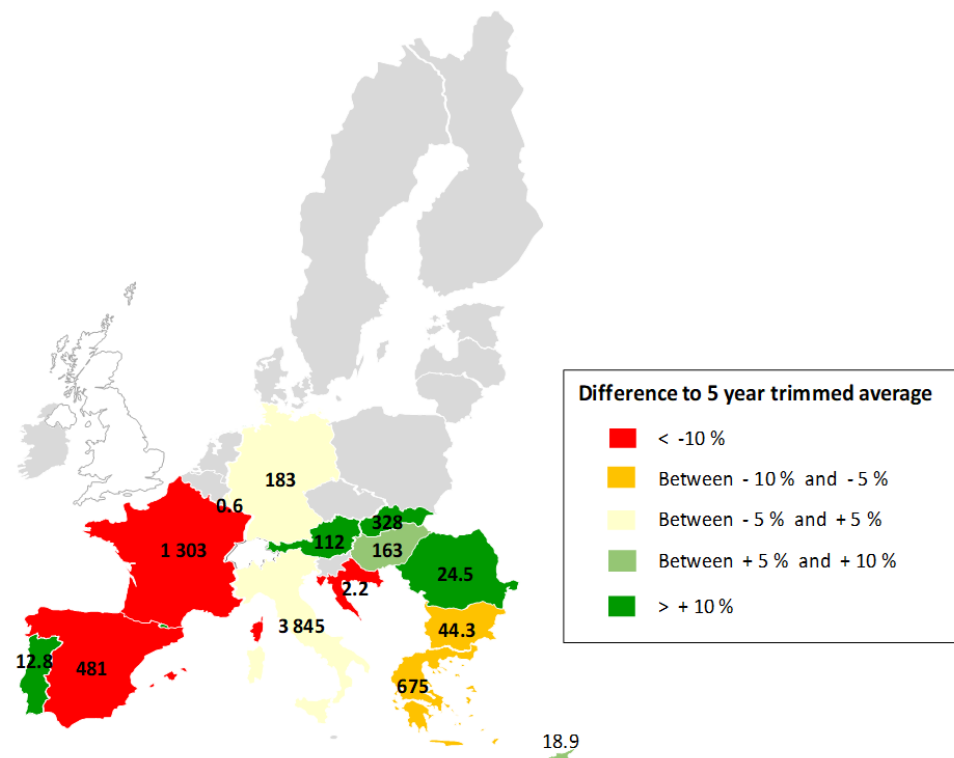
# Durum wheat 2023/24

Durum wheat area - 2023 projection (thousand hectares)



EU area: 2 142 thousand hectares - difference to 5 year trimmed average: -1.9%

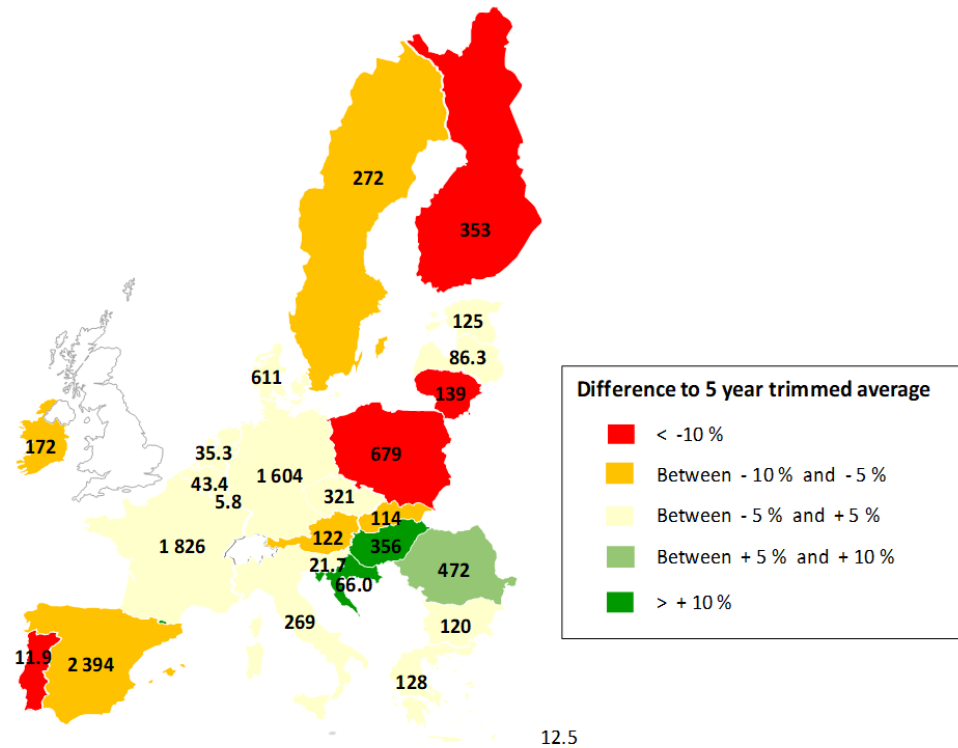
Durum wheat production - 2023 projection (thousand tonnes)



EU production: 7 194 thousand tonnes - difference to 5 year trimmed average: -5%

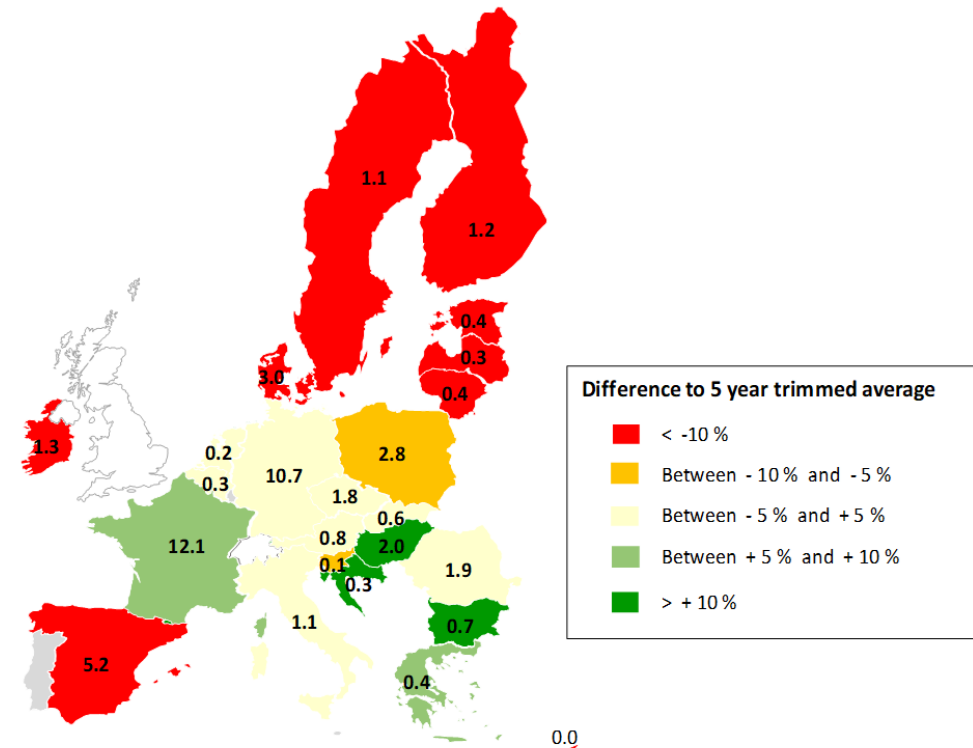
# Barley 2023/24

Barley area - 2023 projection (thousand hectares)



EU area: 10 358 thousand hectares - difference to 5 year trimmed average: -4.3%

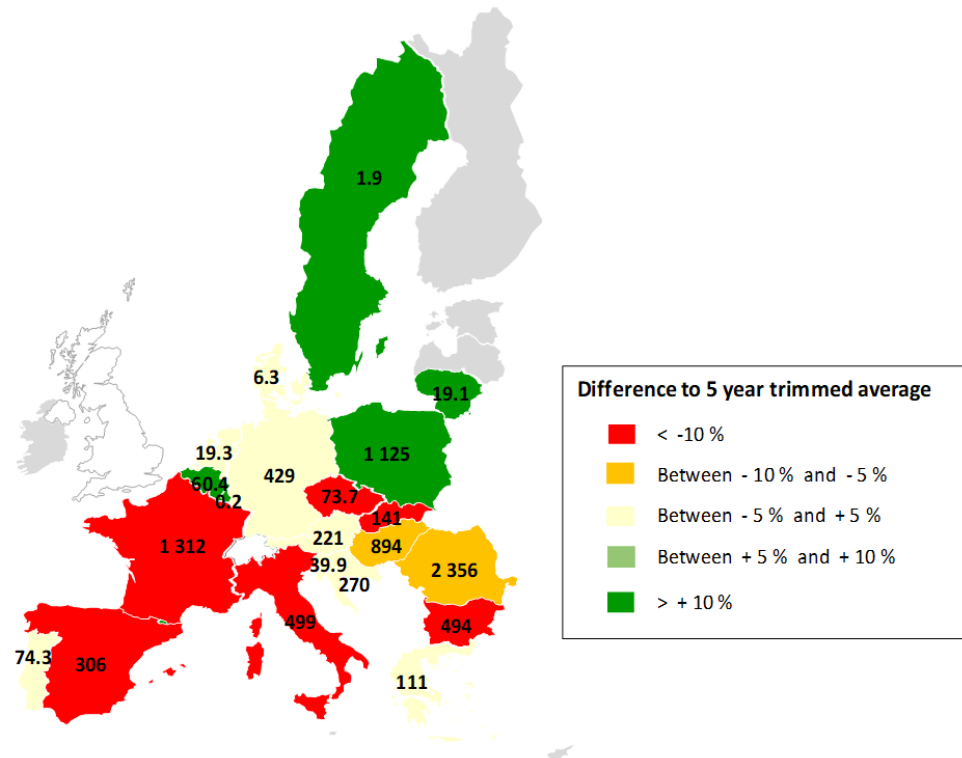
Barley production - 2023 projection (million tonnes)



EU production: 48.7 million tonnes - difference to 5 year trimmed average: -6.8%

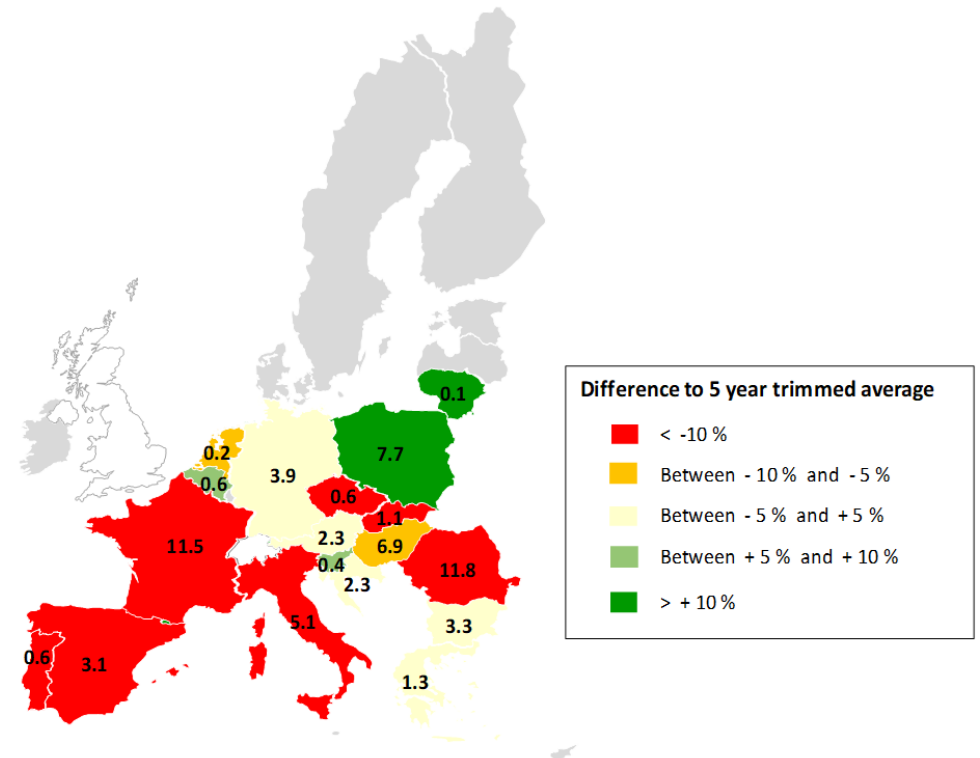
# Maize 2023/24

Maize area - 2023 projection (thousand hectares)



EU area: 8 453 thousand hectares - difference to 5 year trimmed average: -6.1%

Maize production - 2023 projection (million tonnes)



EU production: 63 million tonnes - difference to 5 year trimmed average: -8.5%

# EU 2023/2024 Usable Production: comparison with other forecasters

*(million tonnes)*

	EC DG AGRI 27-July	Stratégie Grains 13-July	COCERAL 12-June
Soft Wheat	126.4	126.2	127.3
Durum Wheat	7.2	7.2	7.6
Barley	48.7	47.1	49.5
Maize	63.0	60.8	61.1
Rye	7.3	7.3	7.3
<b>Total Cereals</b>	<b>273.6</b>	<b>268.0</b>	<b>273.4</b>



# EU 2023/2024 Cereals Balance Sheet

(thousand metric tonnes)

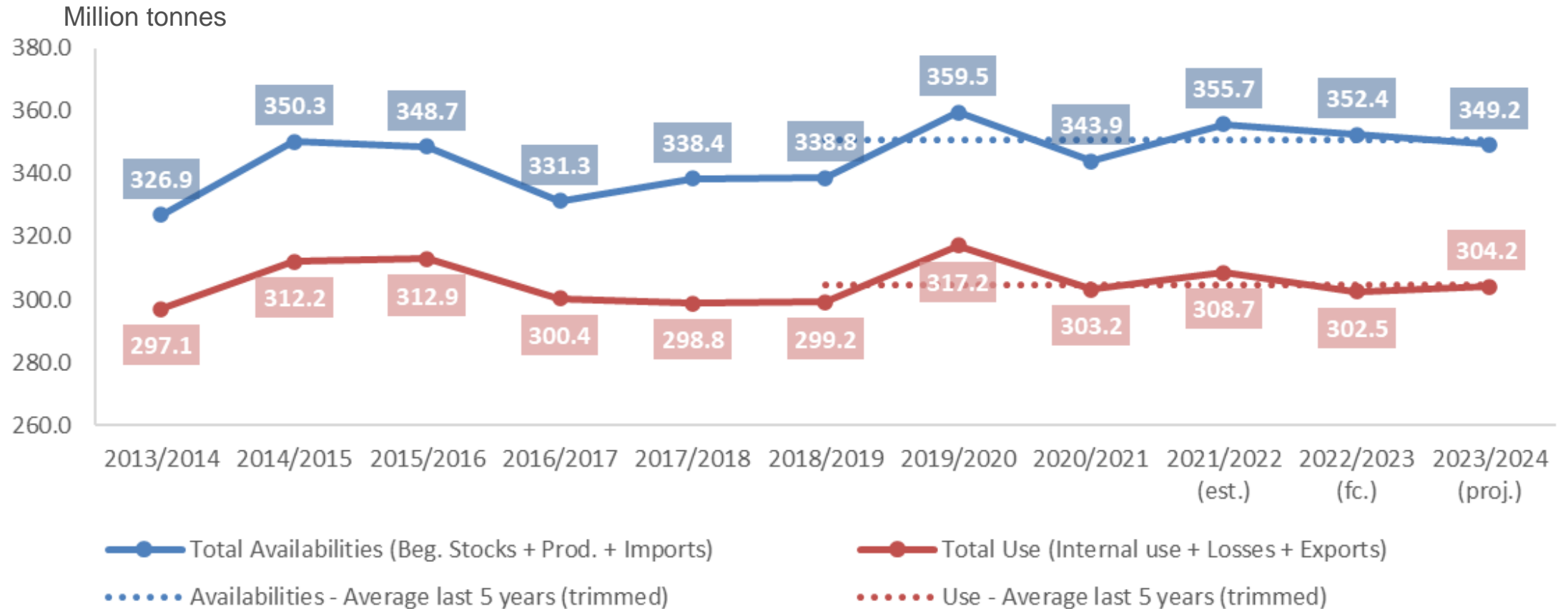
last updated: 27/07/2023

	2023/24 proj.									
	Common wheat	Barley	Durum wheat	Maize	Rye	Sorghum	Oats	Triticale	Others	TOTAL CEREALS
<b>Beginning stocks</b>	19 933	5 850	276	19 161	976	482	1 326	1 613	341	49 957
Usable production	126 433	48 725	7 194	62 973	7 310	629	6 914	10 995	2 477	273 649
Area (thousand ha)	21 922	10 358	2 142	8 453	1 820	135	2 282	2 609	907	50 627
Yield (tonnes/ha)	6	5	3	7	4	5	3	4	3	5
Imports (from third countries)	4 000	1 500	2 600	17 000	161	92	106	2	164	25 625
<b>Total supply</b>	<b>150 366</b>	<b>56 075</b>	<b>10 070</b>	<b>99 134</b>	<b>8 447</b>	<b>1 203</b>	<b>8 346</b>	<b>12 609</b>	<b>2 982</b>	<b>349 230</b>
Total domestic use	100 955	40 988	9 030	75 849	7 582	1 107	7 423	11 063	2 444	256 441
Human consumption	41 796	366	8 193	4 769	3 086	157	1 116	52	23	59 557
Seed	4 600	2 131	400	402	300	29	350	500	270	8 981
Industrial uses	9 000	6 700	95	11 700	1 500		101	445	170	29 710
<i>of which bioethanol/biofuel</i>	<i>3 200</i>	<i>437</i>		<i>6 600</i>	<i>900</i>			<i>344</i>	<i>14</i>	<i>11 495</i>
Animal feed	44 800	31 500	300	58 600	2 652	918	5 814	10 000	1 966	156 550
Losses	759	292	43	378	44	4	41	66	15	1 642
Exports (to third countries)	32 000	10 000	700	4 694	189	16	159	5	20	47 783
<b>Total use</b>	<b>132 955</b>	<b>50 988</b>	<b>9 730</b>	<b>80 543</b>	<b>7 771</b>	<b>1 124</b>	<b>7 581</b>	<b>11 068</b>	<b>2 464</b>	<b>304 224</b>
<b>Ending stocks**</b>	<b>17 411</b>	<b>5 086</b>	<b>339</b>	<b>18 591</b>	<b>676</b>	<b>79</b>	<b>764</b>	<b>1 541</b>	<b>518</b>	<b>45 007</b>
<b>Change in stocks**</b>	<b>-2 522</b>	<b>-764</b>	<b>64</b>	<b>-570</b>	<b>-300</b>	<b>-403</b>	<b>-561</b>	<b>-71</b>	<b>176</b>	<b>-4 951</b>

\* Marketing year: from July to June

\*\* At the end of the marketing year

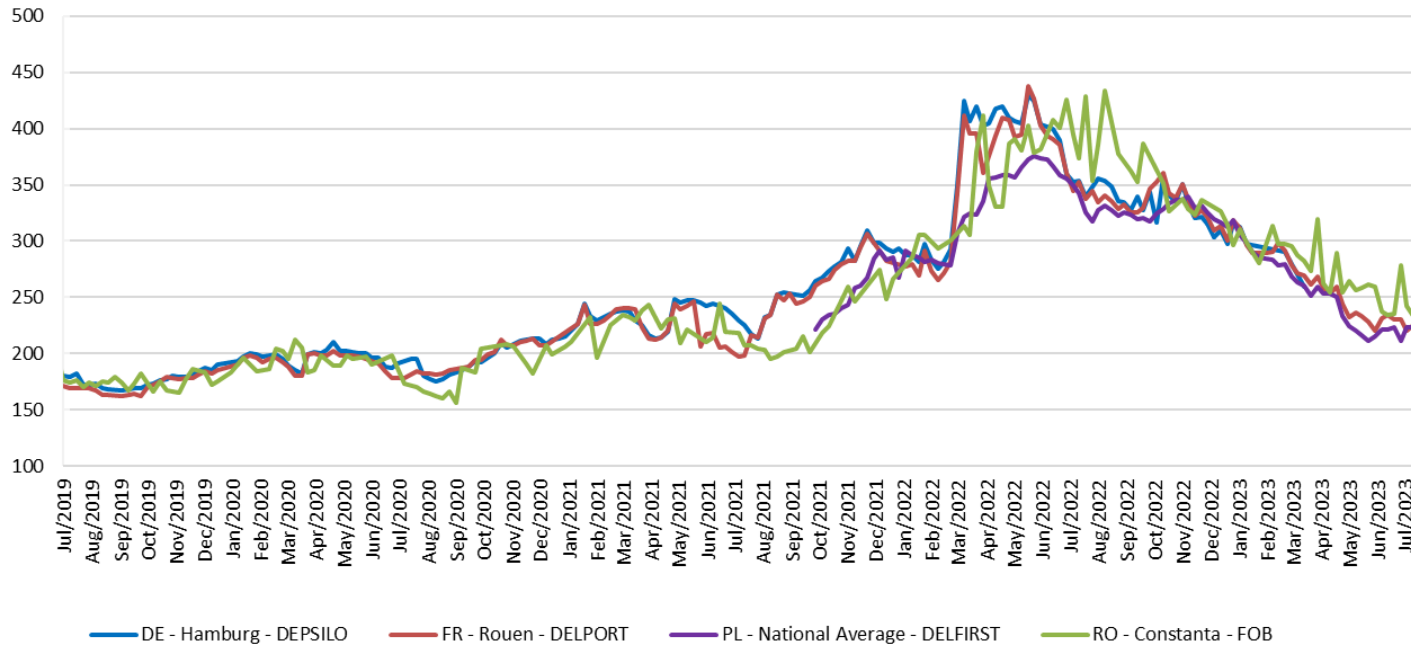
# Projected EU availabilities and uses



# EU cereals market figures

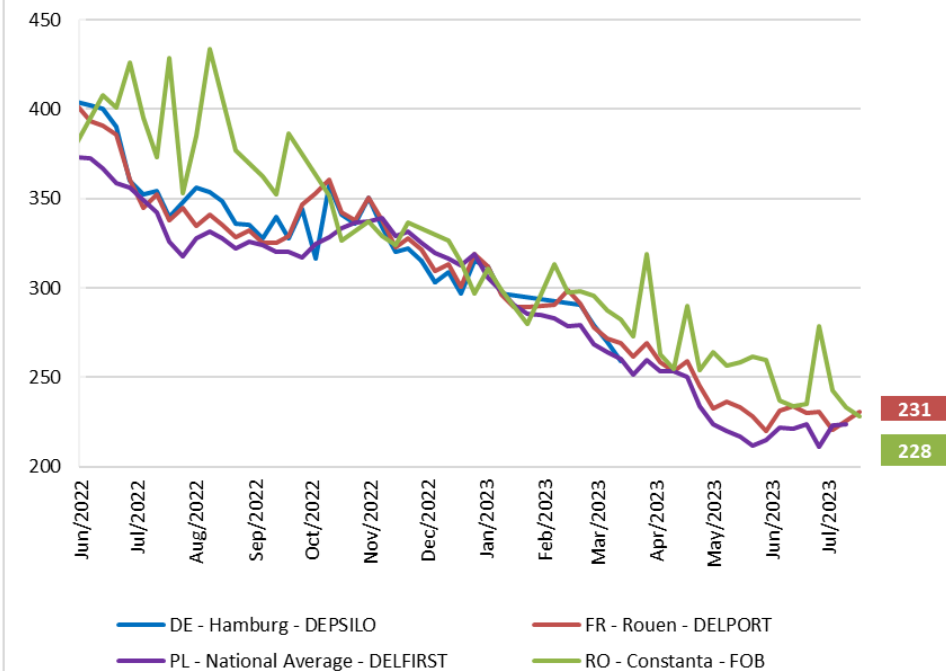
# EU market prices for milling wheat – (EUR per tonne)

EU market prices for milling wheat (EUR/tonne)



Source: Member States notifications - Commission Implementing Regulation (EU) 2017/1185 Art.11, Annex I Point 1

EU market prices for milling wheat (EUR/tonne)



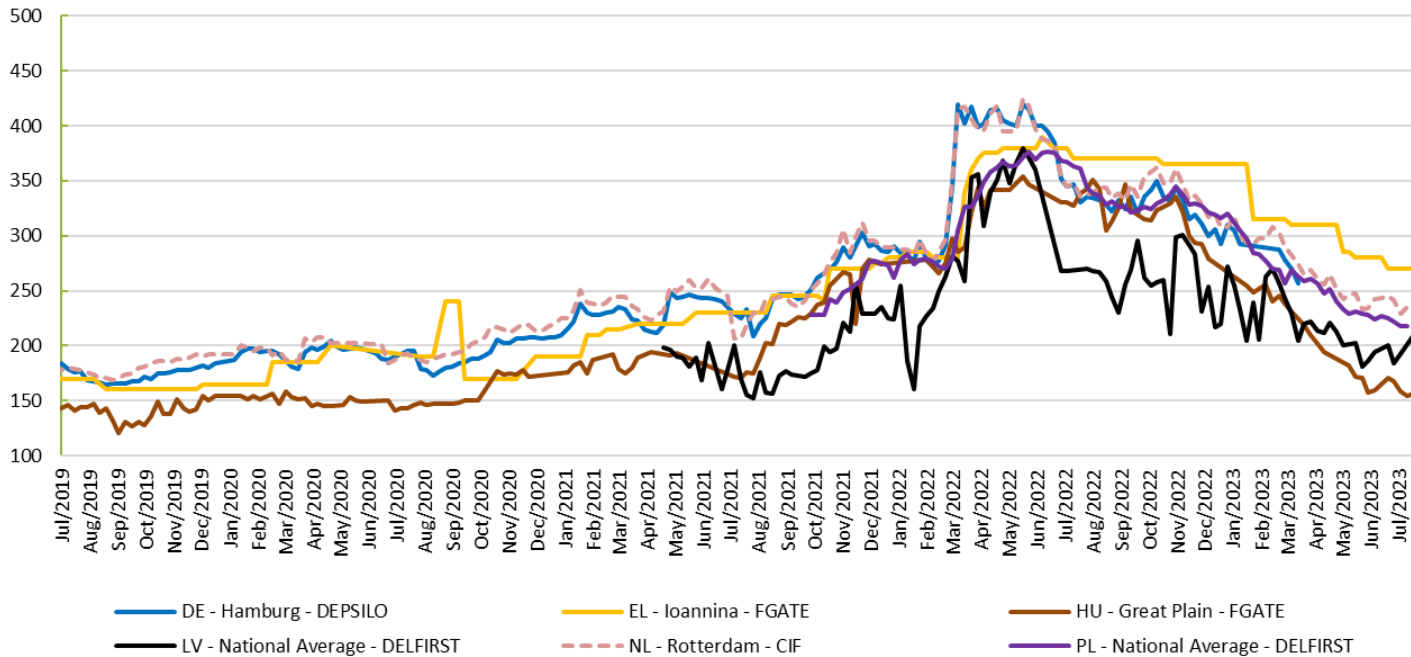
Source: Member States notifications - Commission Implementing Regulation (EU) 2017/1185 Art.11, Annex I Point 1

**France**  
(DELPORT Rouen)

• EUR 231 per tonne; +0.2% month-on-month; -31.8% year-on-year

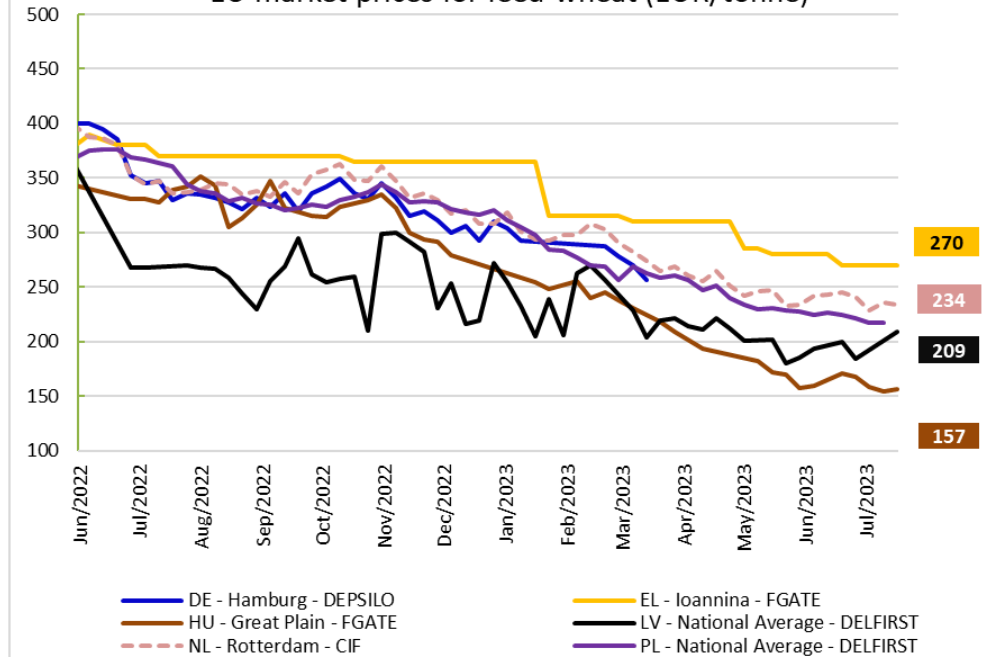
# EU market prices for feed wheat – (EUR per tonne)

EU market prices for feed wheat (EUR/tonne)



Source: Member States notifications - Commission Implementing Regulation (EU) 2017/1185 Art.11, Annex I Point 1

EU market prices for feed wheat (EUR/tonne)



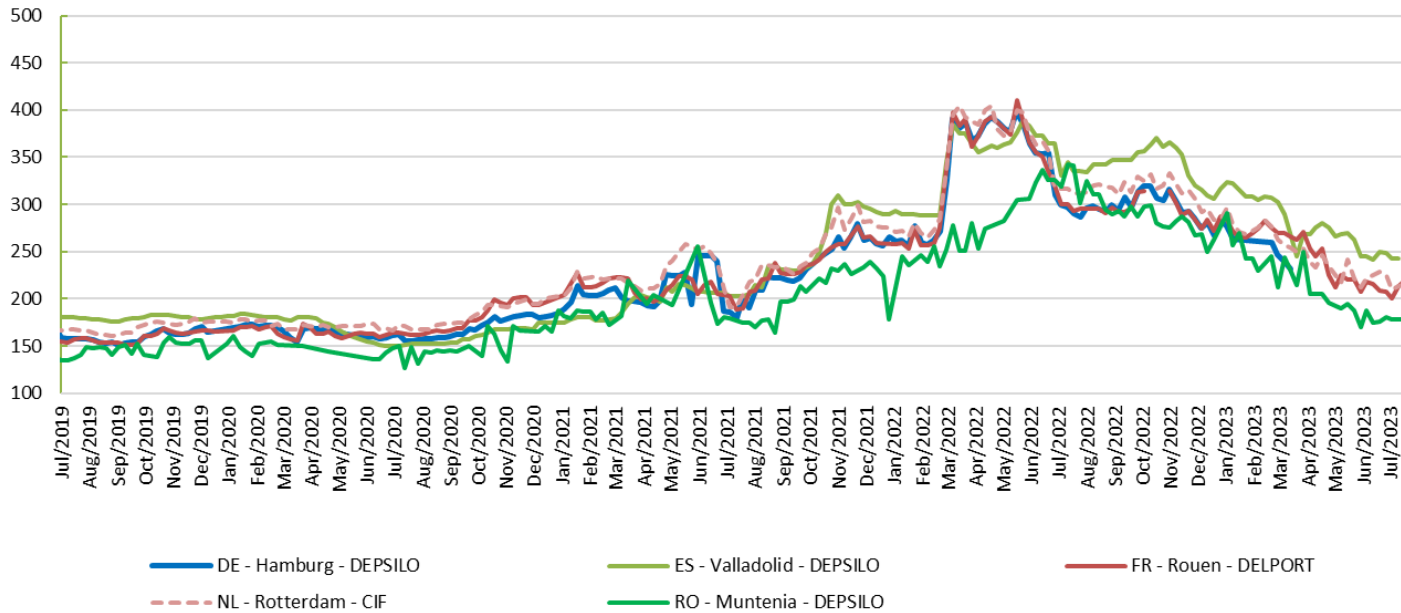
Source: Member States notifications - Commission Implementing Regulation (EU) 2017/1185 Art.11, Annex I Point 1

**Netherlands**  
(CIF – Rotterdam)

- EUR 234 per tonne; -4.5% month-on-month; -30.3% year-on-year

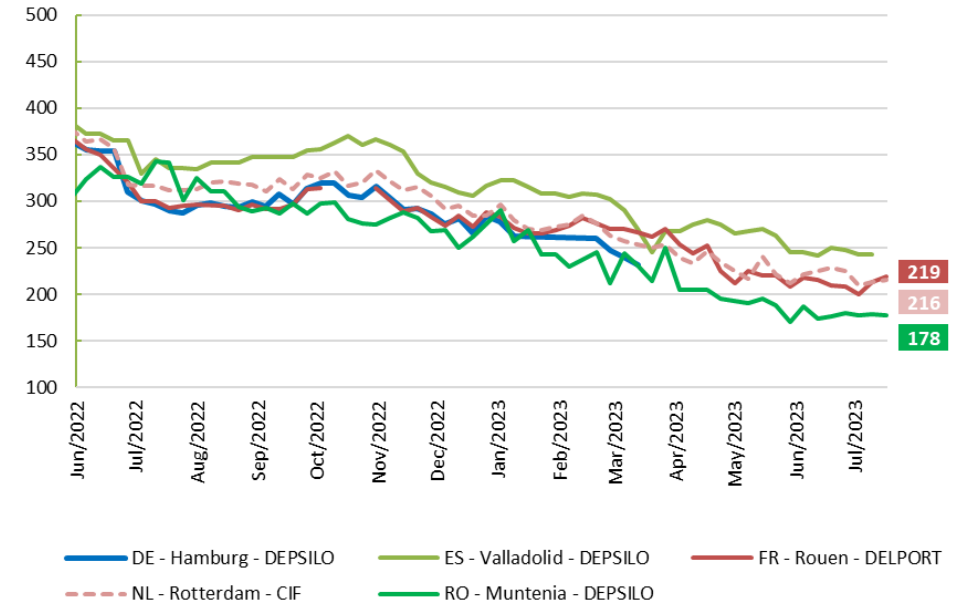
# EU market prices for feed barley – (EUR per tonne)

EU market prices for feed barley (EUR/tonne)



Source: Member States notifications - Commission Implementing Regulation (EU) 2017/1185 Art.11, Annex I Point 1

EU market prices for feed barley (EUR/tonne)



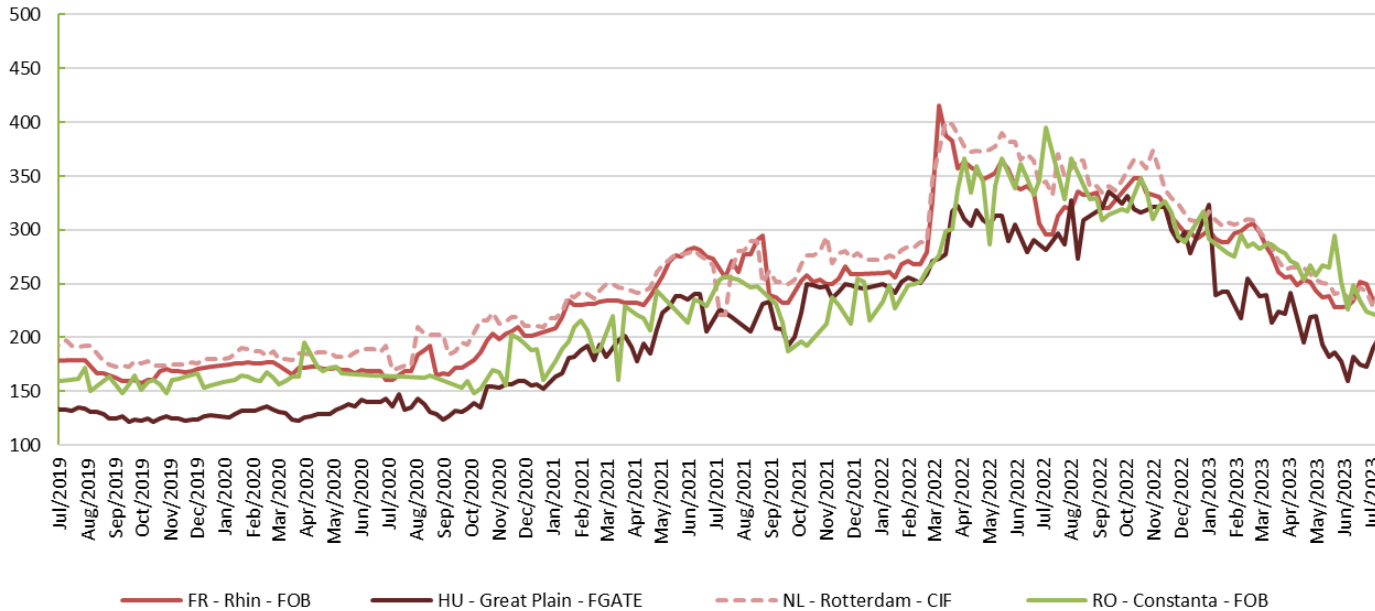
Source: Member States notifications - Commission Implementing Regulation (EU) 2017/1185 Art.11, Annex I Point 1

**France**  
(DELPOR Rouen)

• EUR 219 per tonne; +4.8% month-on-month; -25.1% year-on-year

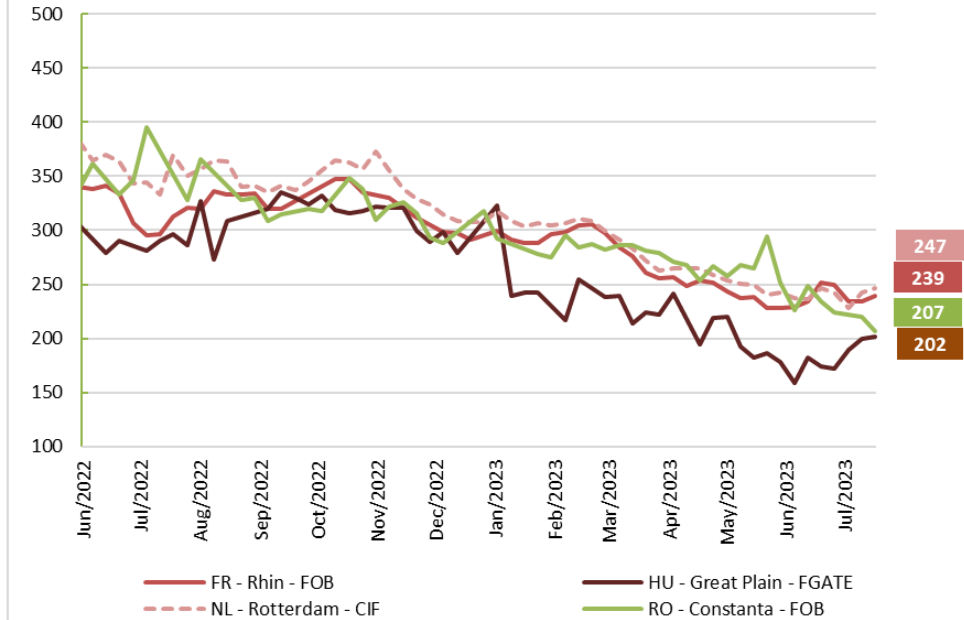
# EU market prices for maize – (EUR per tonne)

EU market prices for maize (EUR/tonne)



Source: Member States notifications - Commission Implementing Regulation (EU) 2017/1185 Art.11, Annex I Point 1

EU market prices for maize (EUR/tonne)



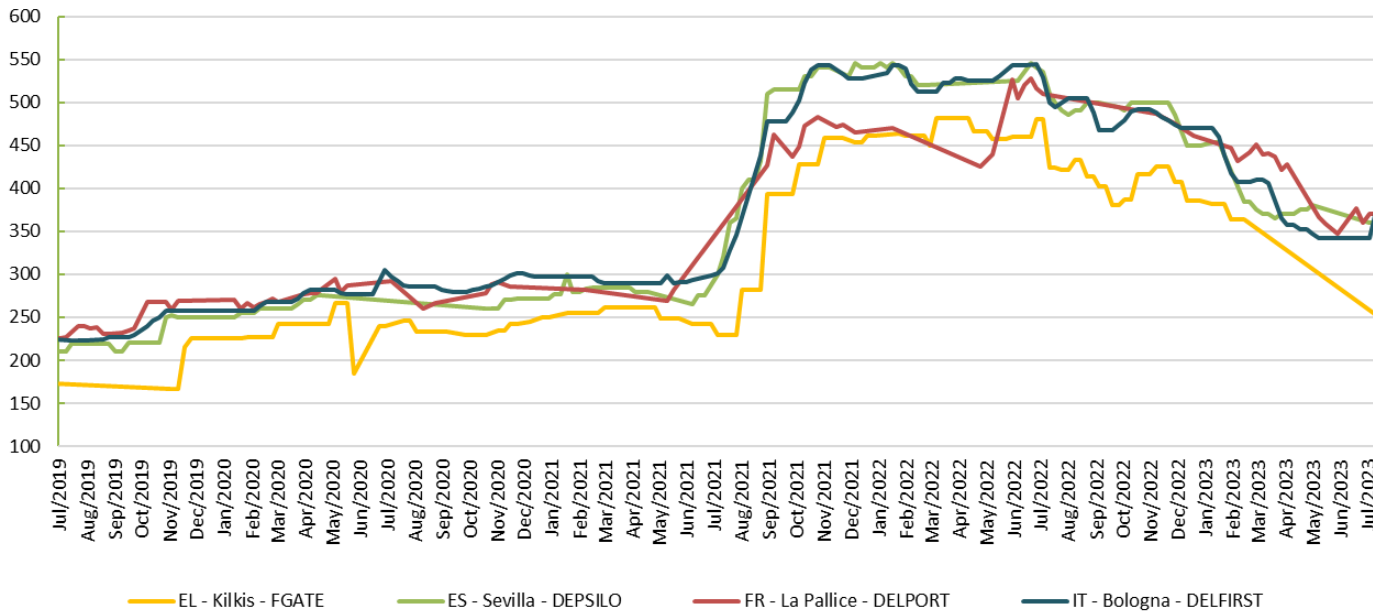
Source: Member States notifications - Commission Implementing Regulation (EU) 2017/1185 Art.11, Annex I Point 1

**France**  
(FOB Rhin)

• EUR 239 per tonne; -4.9 month-on-month; -23.7% year-on-year

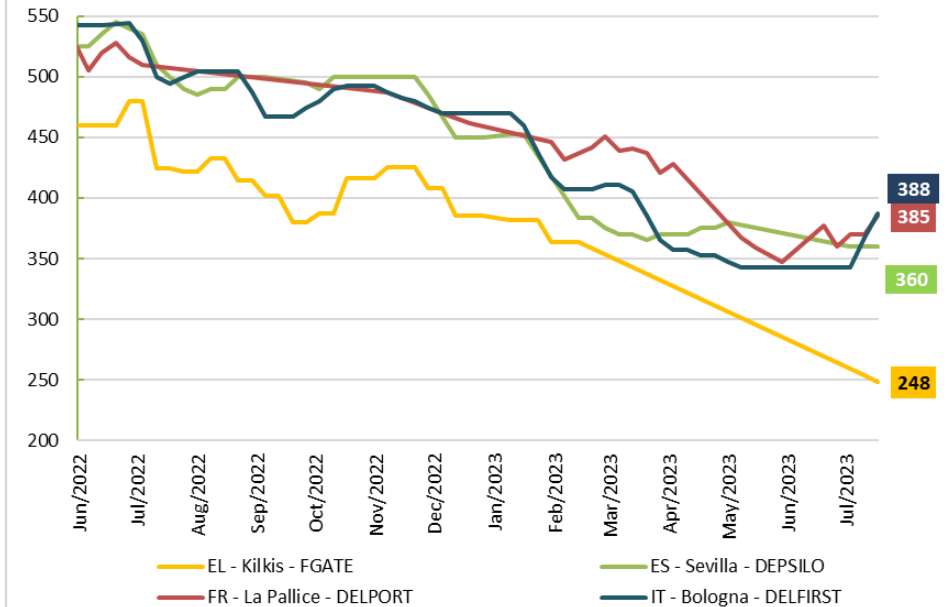
# EU market prices for durum wheat – (EUR per tonne)

EU market prices for durum wheat (EUR/tonne)



Source: Member States notifications - Commission Implementing Regulation (EU) 2017/1185 Art.11, Annex I Point 1

EU market prices for durum wheat (EUR/tonne)



Source: Member States notifications - Commission Implementing Regulation (EU) 2017/1185 Art.11, Annex I Point 1

**France**  
(DELPORT La Pallice)

• EUR 385 per tonne; +2.1% month-on-month; -24.5% year-on-year



# Thank you

The United Kingdom is no longer a Member State of the European Union, however where it is deemed relevant (e.g. for comparison purposes) an EU+UK aggregate are still displayed



© European Union 2020

Unless otherwise noted the reuse of this presentation is authorised under the [CC BY 4.0](https://creativecommons.org/licenses/by/4.0/) license. For any use or reproduction of elements that are not owned by the EU, permission may need to be sought directly from the respective right holders.

