



EU PRICES of COW'S RAW MILK in EURO/100 kg

Source: Regulation (EU) No 2017/1185 Article 12(a) - Annex II.4(a) (prices of raw milk at real fat and protein content paid to milk producers)

	Member States																										Weighted averages			% compared to previous month (*)			
	Belgium	Bulgaria	Czech Rep.	Denmark	Germany	Estonia	Ireland	Greece	Spain	France	Croatia	Italy	Cyprus	Latvia	Lithuania	Luxembourg	Hungary	Malta	Netherlands	Austria	Poland	Portugal	Romania	Slovenia	Slovakia	Finland	Sweden	U.K.	EU-15			EU-13	EU (weight. avg.)
2017m01	34.97	30.94	27.90	35.37	34.13	32.66	35.45	38.71	30.68	34.23	31.69	36.25	57.14	31.01	30.32	35.18	29.53	47.16	34.50	34.88	30.21	28.31	30.82	28.58	29.15	37.41	37.00	30.39	33.96	30.27	33.44	+1.1%	Jan-17
2017m02	34.10	30.95	28.79	36.45	33.97	32.55	34.18	37.37	30.68	33.26	31.85	36.43	56.28	30.00	29.71	34.57	29.78	45.59	35.00	34.88	30.57	28.32	30.16	28.55	29.52	37.28	37.90	31.25	33.86	30.46	33.38	-0.2%	Feb-17
2017m03	33.73	30.88	29.26	36.85	33.56	32.13	31.66	37.93	30.49	32.61	31.37	36.64	55.27	29.50	28.59	34.41	29.56	45.07	36.00	34.83	30.52	28.70	29.66	28.68	29.51	37.17	37.88	30.81	33.58	30.32	33.12	-0.8%	Mar-17
2017m04	33.44	30.00	29.88	35.76	33.49	31.06	31.66	37.96	30.39	33.61	31.06	36.32	55.12	29.23	27.73	33.81	29.62	44.87	36.00	34.58	30.66	28.72	28.79	28.66	29.79	37.08	36.70	30.81	33.64	30.30	33.17	+0.2%	Apr-17
2017m05	32.95	29.33	30.42	34.68	33.83	30.76	32.63	37.90	30.29	32.43	30.87	36.62	54.42	28.82	26.79	32.98	29.50	44.81	36.00	34.68	30.95	28.60	26.90	28.47	29.86	36.94	35.34	30.41	33.42	30.29	32.97	-0.6%	May-17
2017m06	33.19	28.98	31.02	34.82	34.38	31.55	33.60	38.02	30.10	32.32	30.54	36.62	54.67	29.15	26.64	32.86	29.51	45.17	36.75	35.82	31.25	28.74	26.28	28.97	29.99	36.76	34.54	29.64	33.57	30.51	33.13	+0.5%	Jun-17
2017m07	34.32	29.31	31.54	36.58	35.89	32.78	34.96	38.02	30.10	34.04	30.67	36.78	55.30	29.81	27.74	33.63	29.88	46.73	37.25	36.76	31.61	28.47	26.66	29.85	30.49	37.50	36.59	30.53	34.70	31.00	34.17	+3.1%	Jul-17
2017m08	36.06	29.84	32.08	37.51	37.44	32.94	37.68	38.83	30.68	35.11	29.95	37.15	55.96	30.05	28.65	35.02	30.47	50.85	38.50	37.70	32.57	29.85	26.91	30.56	30.91	37.66	37.99	30.97	35.83	31.72	35.25	+3.1%	Aug-17
2017m09	37.70	30.60	33.08	38.44	39.39	33.97	40.79	39.34	31.26	36.60	30.84	37.70	56.58	31.79	31.49	37.27	31.17	53.35	40.50	39.74	33.71	30.77	29.46	32.38	31.97	38.22	40.20	32.82	37.46	33.01	36.83	+4.5%	Sep-17
2017m10	37.51	31.27	34.37	39.23	40.34	34.40	41.95	40.04	31.84	36.17	32.24	37.68	57.14	32.69	33.99	38.18	31.93	53.12	41.75	40.99	34.46	31.39	31.37	32.95	33.06	38.88	40.87	34.52	38.11	34.02	37.53	+1.9%	Oct-17
2017m11	37.01	31.84	35.33	39.24	40.52	34.17	41.86	40.60	32.52	36.40	32.34	38.02	56.77	32.73	33.20	38.69	32.32	51.17	41.75	41.44	35.80	32.01	31.29	33.22	33.61	38.96	40.25	34.92	38.30	34.80	37.80	+0.7%	Nov-17
2017m12	35.67	32.29	35.40	37.89	39.96	33.17	40.59	40.74	32.43	36.01	33.12	38.08	55.96	32.59	32.23	38.49	32.45	49.16	41.50	41.81	36.07	32.30	31.97	32.97	33.97	38.78	40.05	34.79	37.90	34.91	37.48	-0.9%	Dec-17
2018m01	31.59	31.99	34.48	35.86	36.76	31.86	39.43	40.48	31.94	35.27	33.21	36.57	55.69	30.72	30.76	34.89	32.13	46.97	37.50	40.27	34.02	31.16	32.11	31.10	33.71	39.17	37.56	33.35	35.90	33.51	35.56	-5.1%	Jan-18
2018m02	31.37	30.77	33.82	33.44	34.88	30.24	37.00	40.37	31.94	35.04	33.40	35.98	54.92	28.18	29.38	33.56	31.52	46.72	35.75	38.18	32.95	31.39	31.94	29.88	33.02	39.15	35.77	32.31	34.73	32.51	34.41	-3.2%	Feb-18
2018m03	31.01	30.03	32.82	33.29	34.21	29.97	33.31	39.98	31.46	33.85	33.08	35.81	54.09	27.48	28.72	31.98	30.74	46.35	35.50	36.96	32.41	30.18	30.70	29.22	32.42	39.28	33.46	31.32	33.85	31.85	33.57	-2.5%	Mar-18
2018m04	30.17	29.12	32.05	33.30	32.99	29.64	31.08	39.40	30.87	32.90	32.33	35.24	54.02	26.93	26.83	30.81	29.91	46.79	34.50	35.81	31.96	30.99	29.68	28.58	31.35	39.00	32.32	30.51	32.91	31.17	32.66	-2.7%	Apr-18
2018m05	29.58	29.07	31.21	34.23	32.38	29.23	31.17	39.17	30.68	32.43	31.83	34.89	54.37	26.74	25.96	29.88	28.90	49.13	34.00	35.02	30.69	30.36	28.32	28.74	30.65	36.37	31.68	29.63	32.40	30.19	32.09	-1.7%	May-18
2018m06	30.44	29.04	30.78	36.25	32.56	29.65	31.66	39.51	30.39	32.63	31.60	34.86	55.49	26.98	25.59	30.31	28.07	50.03	34.25	34.55	30.40	30.31	28.21	29.18	30.59	36.06	31.63	30.06	32.66	29.94	32.27	+0.6%	Jun-18
2018m07	30.17	29.36	30.79	37.17	33.19	30.18	31.76	39.53	30.29	33.70	32.16	35.25	56.67	27.65	25.79	31.36	28.04	51.57	35.75	35.33	30.38	30.07	28.45	29.78	30.77	35.83	33.02	31.26	33.42	30.05	32.94	+2.1%	Jul-18
2018m08	31.82	29.38	31.17	37.15	33.83	30.34	33.41	39.59	30.49	34.63	31.65	35.26	56.68	27.97	25.74	32.49	28.33	53.21	35.75	35.12	30.72	29.79	29.00	29.89	30.82	33.29	33.09	34.12	30.32	33.57	+1.9%	Aug-18	
2018m09	33.73	29.72	31.96	37.95	35.43	31.61	37.00	39.83	30.78	35.98	33.00	35.44	56.83	28.95	28.15	34.12	28.69	53.64	37.00	36.45	31.60	30.03	28.82	30.96	31.71	37.40	34.70	34.30	35.43	31.22	34.83	+3.7%	Sep-18
2018m10	35.12	30.30	32.82	37.94	36.63	31.80	37.93	39.61	31.55	36.71	33.84	36.81	56.90	29.34	30.76	36.01	29.57	54.98	38.00	37.86	32.57	31.05	30.52	31.98	32.45	38.83	37.57	34.60	36.39	32.24	35.80	+2.8%	Oct-18
2018m11	35.69	30.43	33.54	37.93	37.16	32.29	39.04	39.25	32.33	36.73	33.69	37.08	57.82	29.65	31.66	36.75	30.29	51.55	37.25	38.68	32.85	31.84	30.68	32.38	32.92	38.70	37.21	34.80	36.63	32.65	36.06	+0.7%	Nov-18
2018m12	36.46	30.46	34.08	36.97	37.16	32.50	38.84	39.35	32.33	36.35	34.08	37.20	57.82	29.85	30.46	36.17	30.24	51.55	37.25	39.10	33.10	31.84	30.53	32.81	31.86	38.50	36.27	33.66	36.39	32.75	35.87	-0.5%	Dec-18

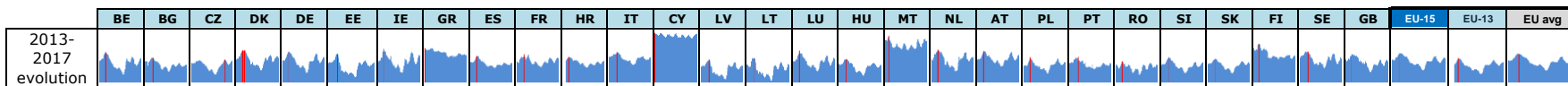
 : Estimations DG AGRI-G3

 : Estimations based on National statistics

 : "estimated" prices by MS (indicator of price movement, not to be relied upon to forecast prices)

Price of Nov 18 compared to :

	BE	BG	CZ	DK	DE	EE	IE	GR	ES	FR	HR	IT	CY	LV	LT	LU	HU	MT	NL	AT	PL	PT	RO	SI	SK	FI	SE	GB	EU-15	EU-13	EU avg
Oct 18	+1.6%	+0.4%	+2.2%	-0.0%	+1.4%	+1.5%	+2.9%	-0.9%	+2.5%	+0.1%	-0.4%	+0.7%	+1.6%	+1.1%	+2.9%	+2.1%	+2.4%	-6.2%	-2.0%	+2.2%	+0.9%	+2.5%	+0.5%	+1.3%	+1.4%	-0.3%	-1.0%	+0.6%	+0.7%	+1.3%	+0.7%
Nov 17	-4%	-4%	-5%	-3%	-8%	-6%	-7%	-3%	-1%	+1%	+4%	-2%	+2%	-9%	-5%	-5%	-6%	+1%	-11%	-7%	-8%	-1%	-2%	-3%	-2%	-1%	-8%	-0%	-4%	-6%	-5%



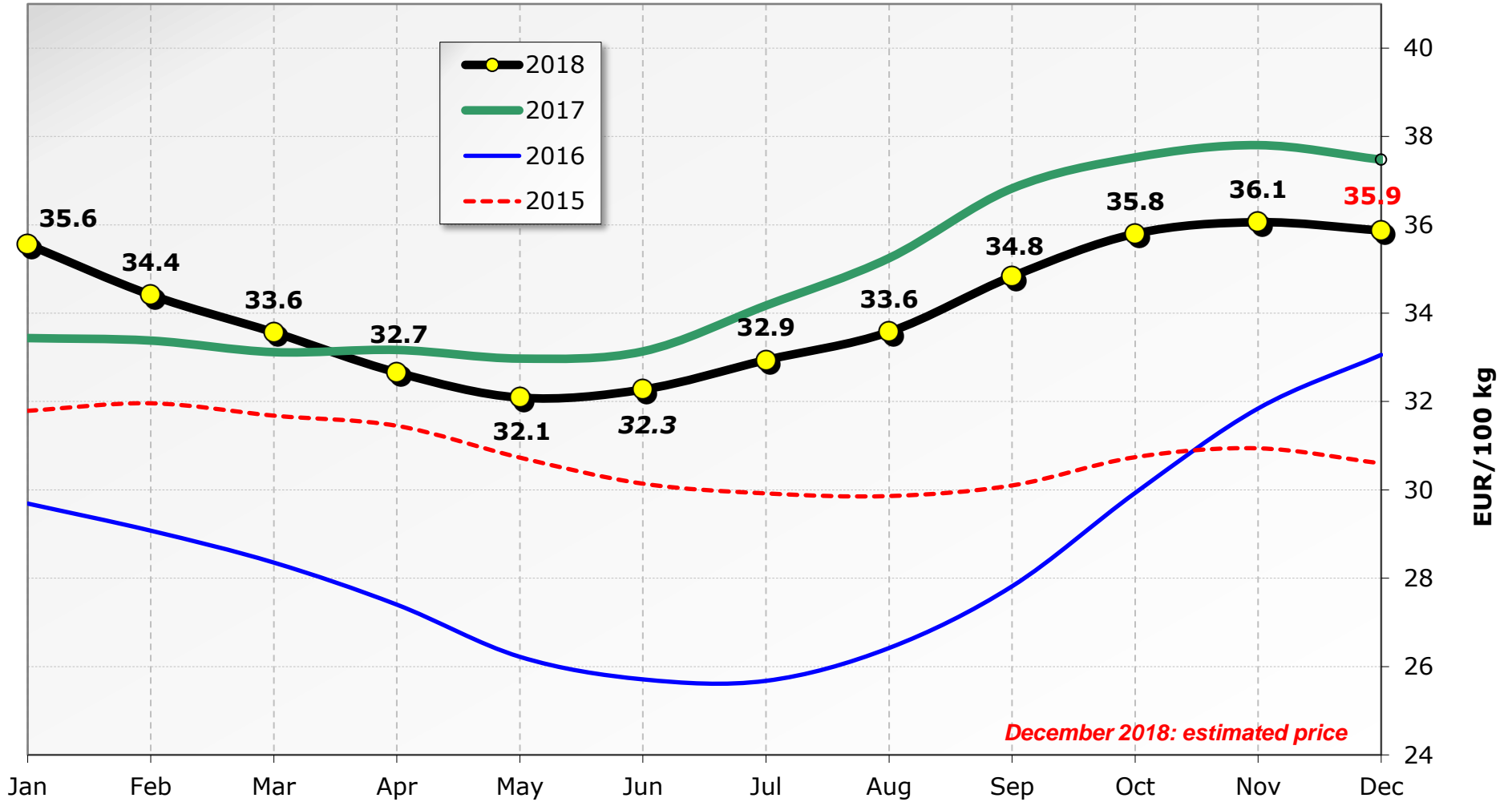
Red lines show maximum values

Max since Jan 2013	41.9	37.0	35.4	43.5	42.5	40.3	44.9	45.5	38.3	39.8	37.8	41.8	58.9	35.2	37.0	42.9	35.7	56.1	44.0	42.7	37.2	37.8	33.8	37.3	36.0	49.5	42.5	40.0	41.0	36.4	40.3
	Dec 13	Mar 14	Dec 17	Nov 13	Nov 13	Mar 14	Nov 13	Jan 13	Dec 13	Jan 14	Dec 13	Mar 14	Jan 13	Mar 14	Feb 14	Dec 13	Jan 14	Jul 13	Nov 13	Dec 13	Dec 13	Apr 14	Dec 13	Feb 14	Feb 14	Oct 13	Mar 14	Nov 13	Nov 13	Dec 13	Dec 13

Min since Jan 2013	22.1	24.6	22.0	26.1	23.2	20.0	23.5	37.4	27.8	28.5	27.9	30.5	54.0	17.7	16.9	24.7	21.0	42.9	25.0	29.3	23.1	26.8	21.6	23.2	23.1	35.4	27.2	24.0	26.2	22.5	25.7
	Jul 16	Jun 16	Jul 16	Jul 16	Jun 16	Jul 16	Jun 16	Jun 16	Jul 16	Jul 16	Jul 16	Aug 16	Apr 18	Jul 16	Jun 16	Jul 16	Jul 16	Apr 16	May 16	Jun 16	Jun 16	Aug 16	Jun 16	Jun 16	Jul 16	Jul 16	Jul 16	Jul 16	Jul 16	Jul 16	Jul 16

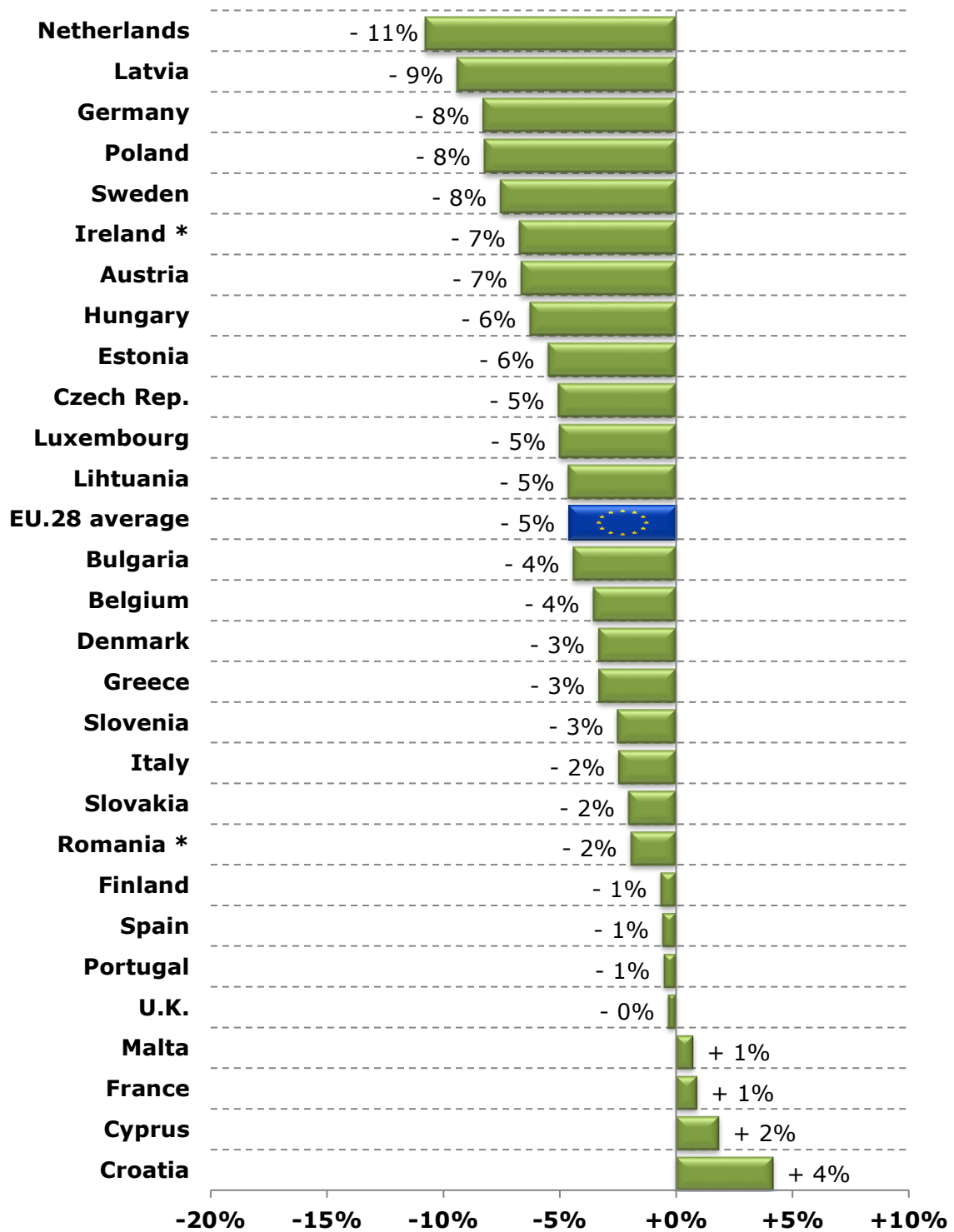
Milk Prices paid to the Producers

EU (weight. avg.)



Source : Member States Reg. (EU) No 2017/1185 Article 12(a) - Annex II.4(a)

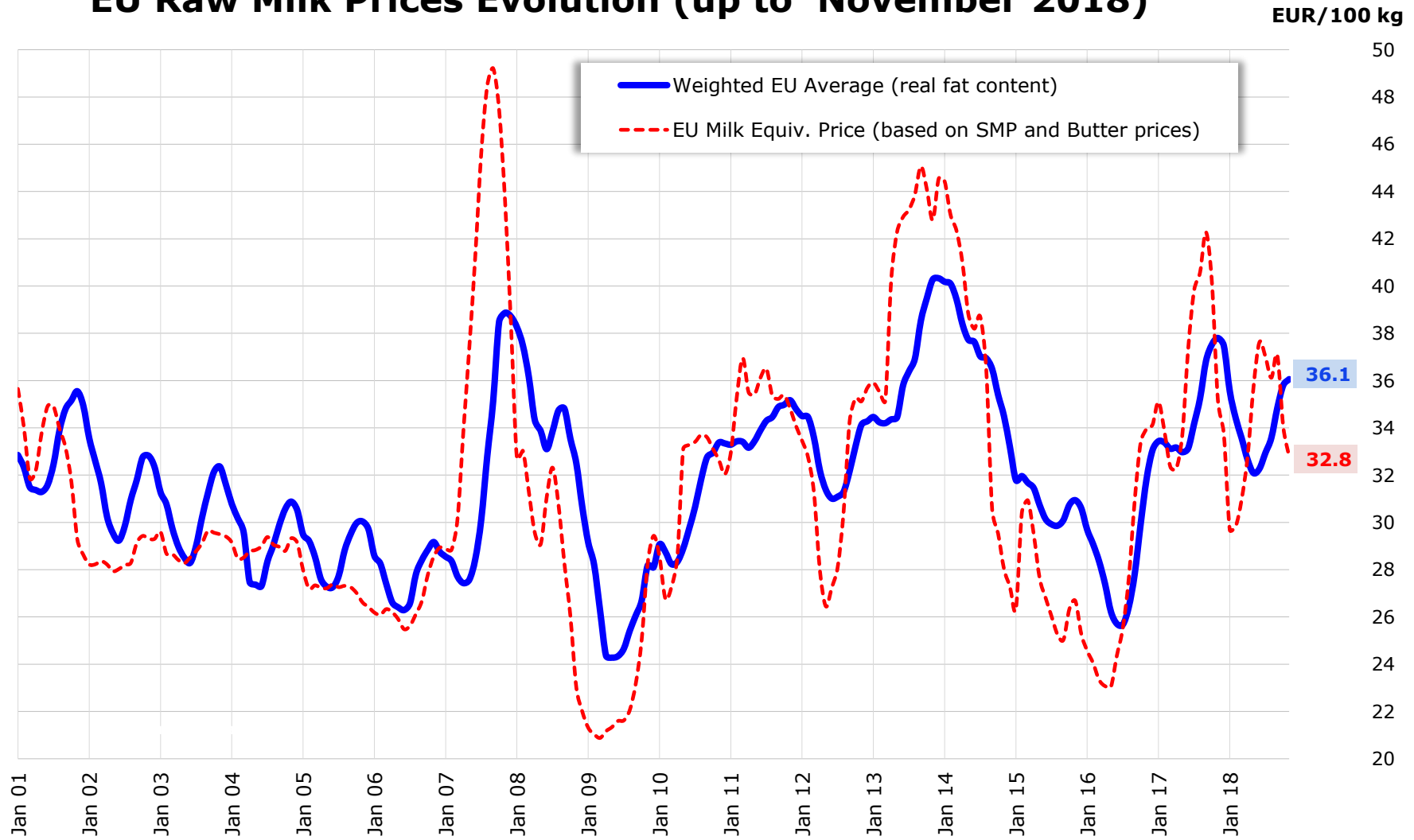
Raw Milk Price evolution in November 2018 compared to November 2017



* : estimated figures for Nov 2018

Source : Member States (Reg. (EU) No 2017/1185 Article 12(a) - Annex II.4(a))

EU Raw Milk Prices Evolution (up to November 2018)



Source : MS' communications under Reg. (EU) No 2017/1185 Article 12(a) - Annex II.4(a)

EU MILK PRICES

(Nov 2018 vs Nov 2017)

Source : Member States (Regulation (EU) No 2017/1185 Article 12(a) - Annex II.4(a))

