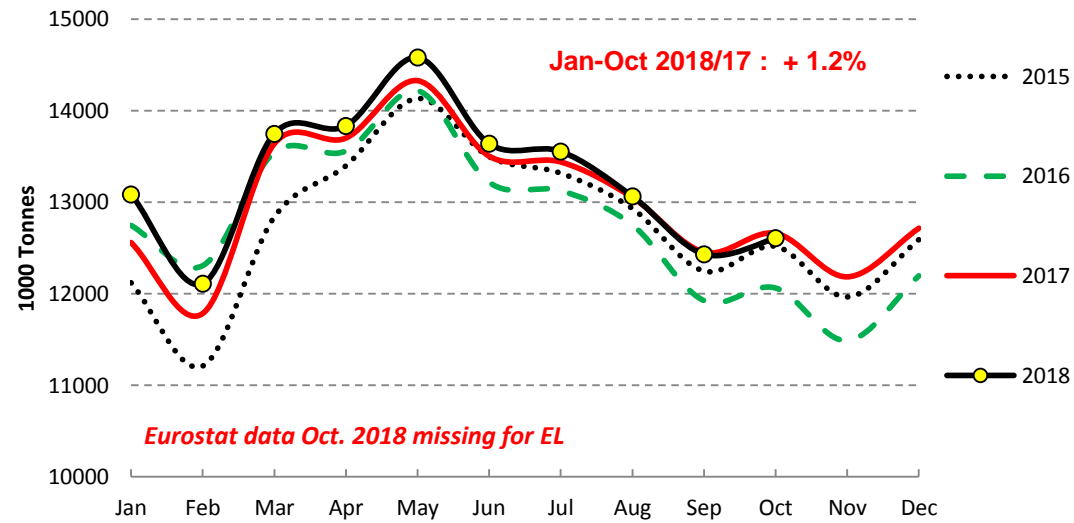


EU Cow's Milk collected

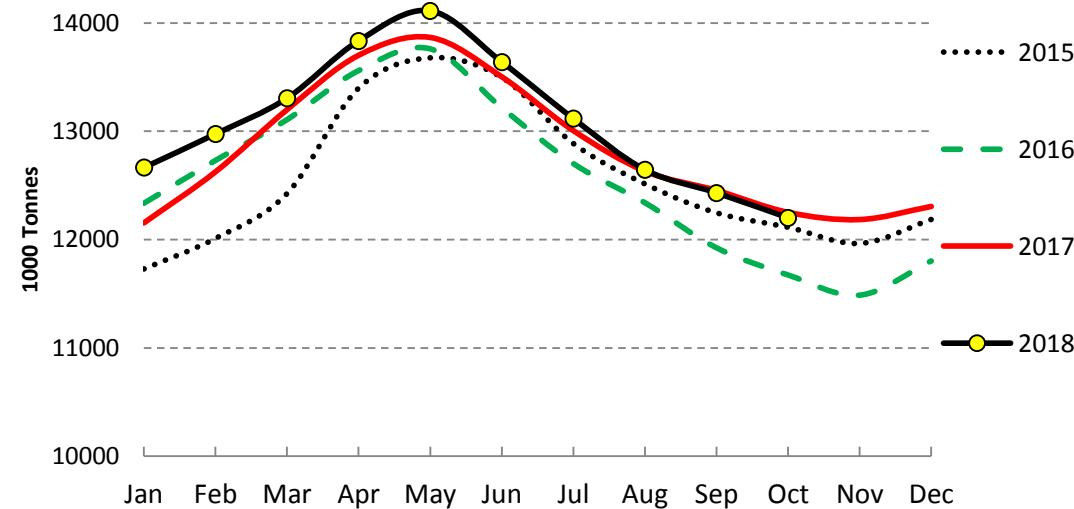
EU - Cows' milk collected



Source : Estat - Newcronos

Last update : Jan-Oct

EU - Cows' milk collected (30d ajusted months)

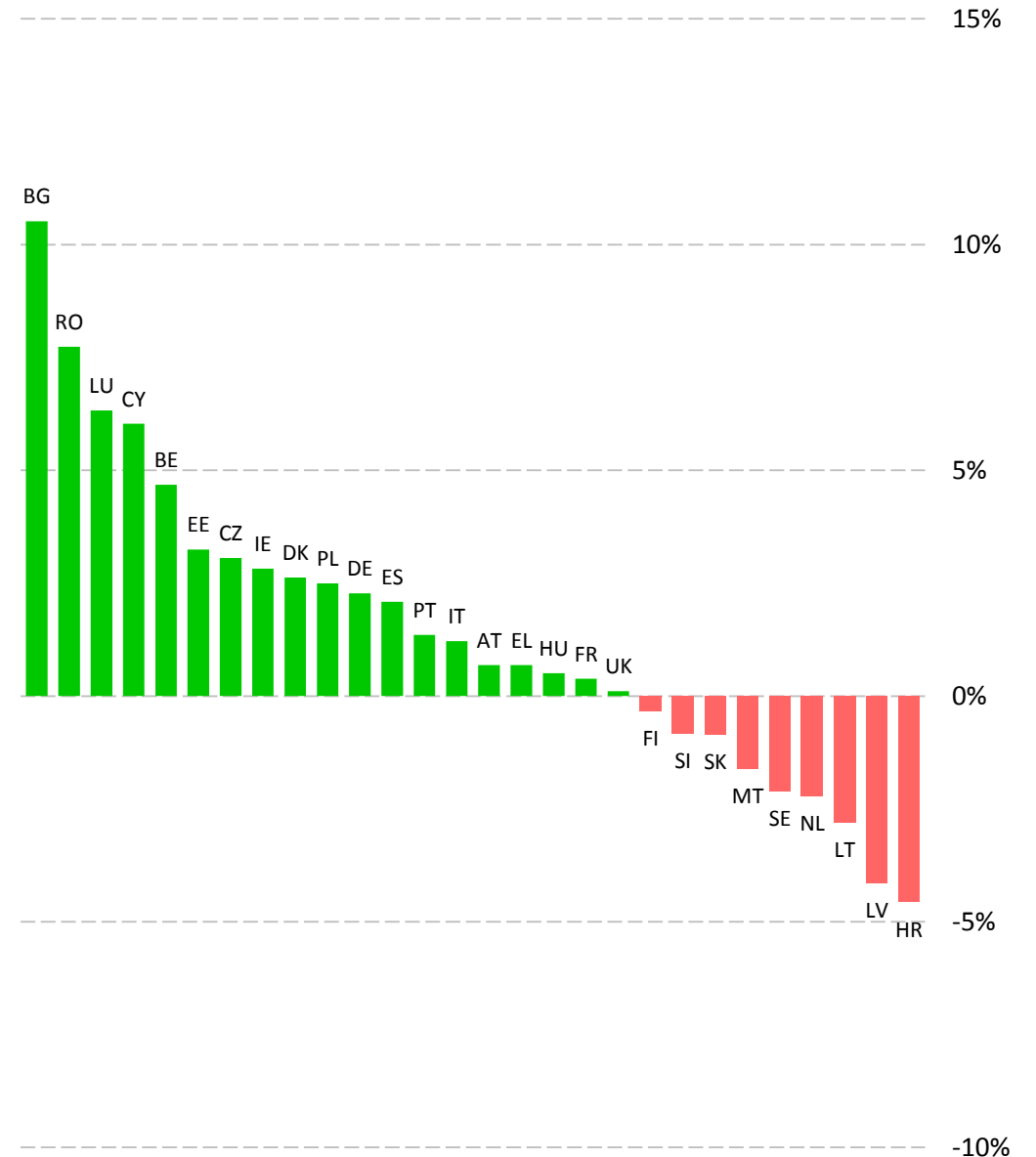


Source : Estat - Newcronos

Last update : Jan-Oct

Cows' milk collected

2018/17 Jan-Oct (y/y %Chg)

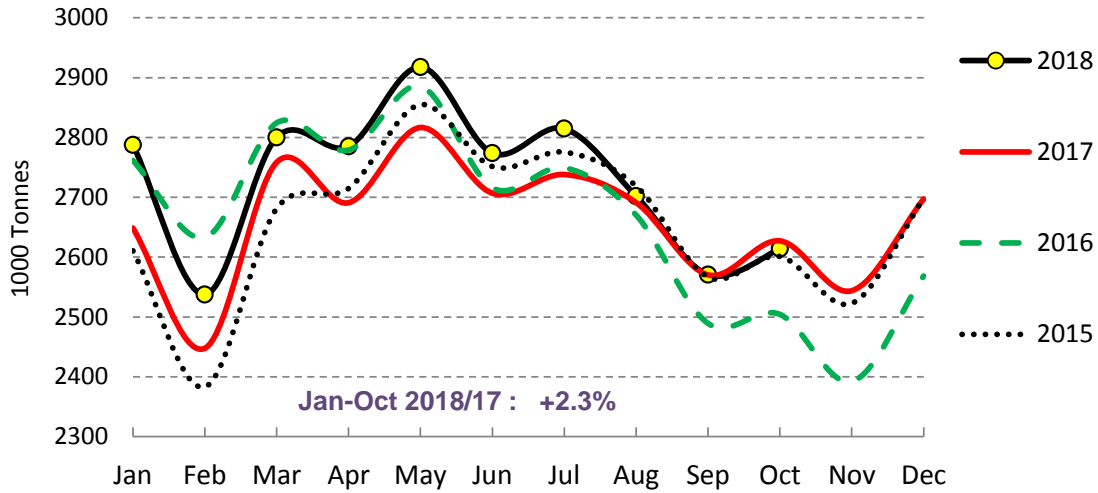


Source : Estat - Newcronos

Last update : Jan-Oct

EU Cows' milk collected - MAIN PRODUCERS (1/2)

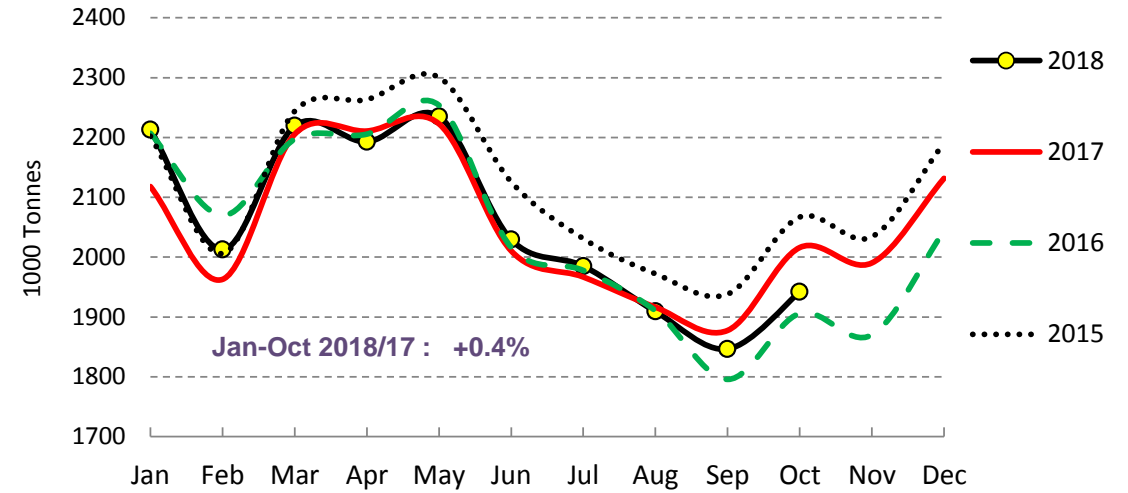
Cows' milk collected - DE



Source : Estat, Newcronos

Last update : Jan-Oct

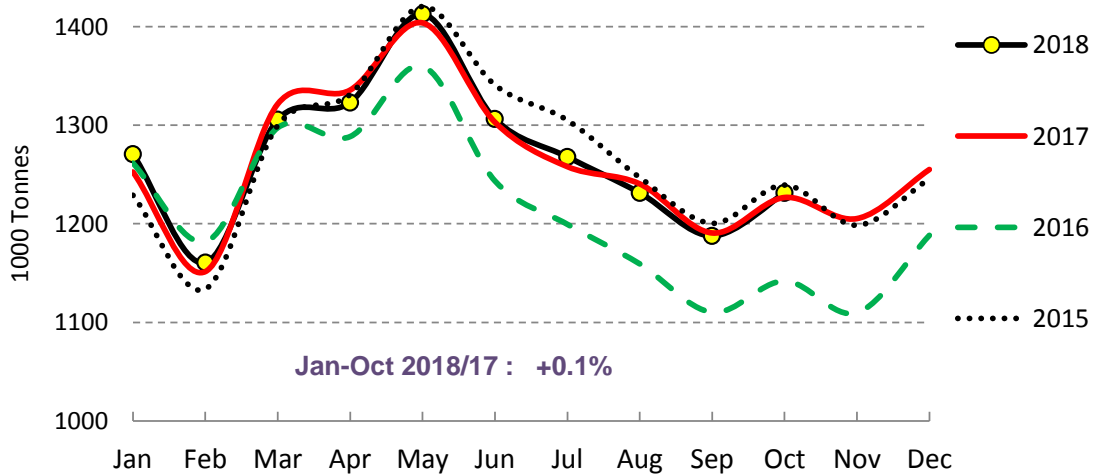
Cows' milk collected - FR



Source : Estat, Newcronos

Last update : Jan-Oct

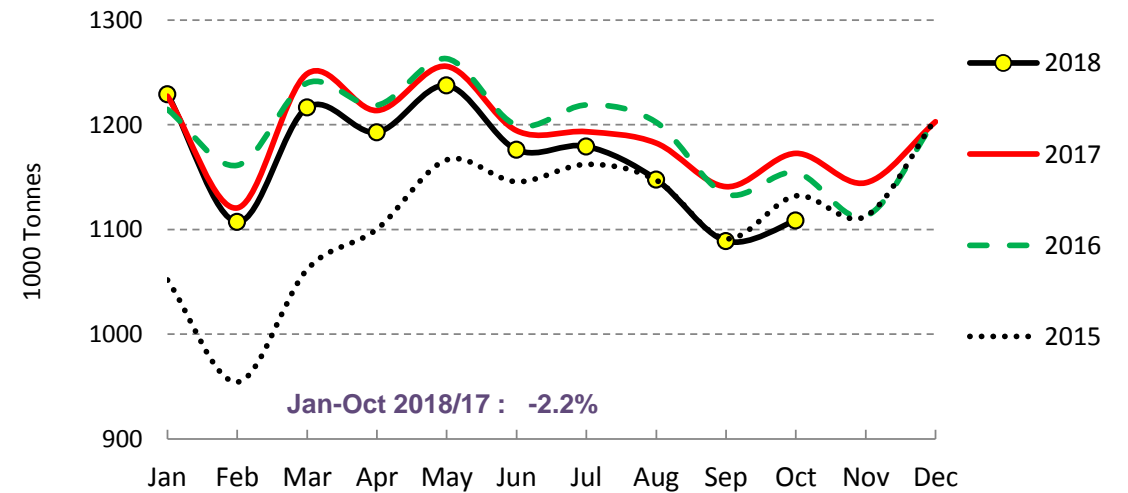
Cows' milk collected - UK



Source : Estat, Newcronos

Last update : Jan-Oct

Cows' milk collected - NL

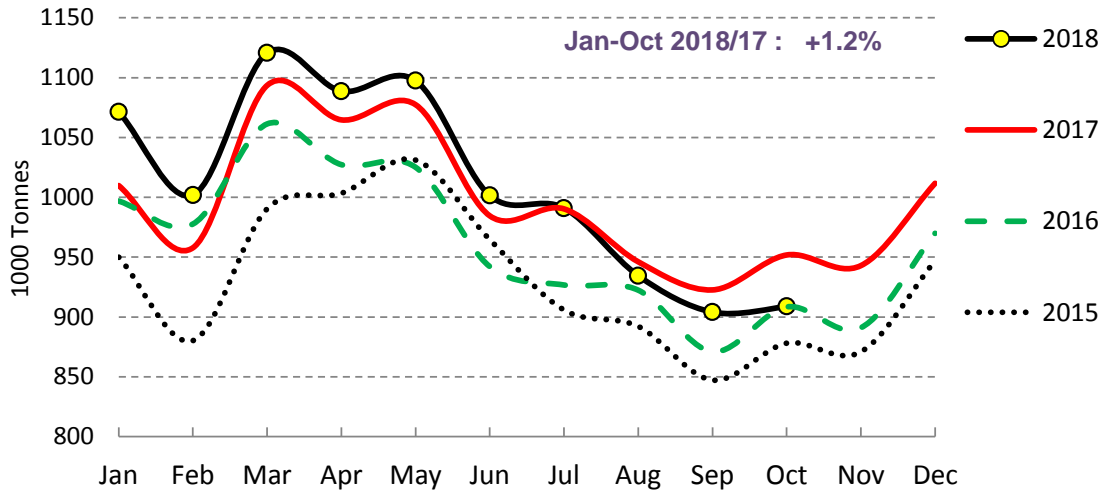


Source : Estat, Newcronos

Last update : Jan-Oct

EU Cows' milk collected - MAIN PRODUCERS (2/2)

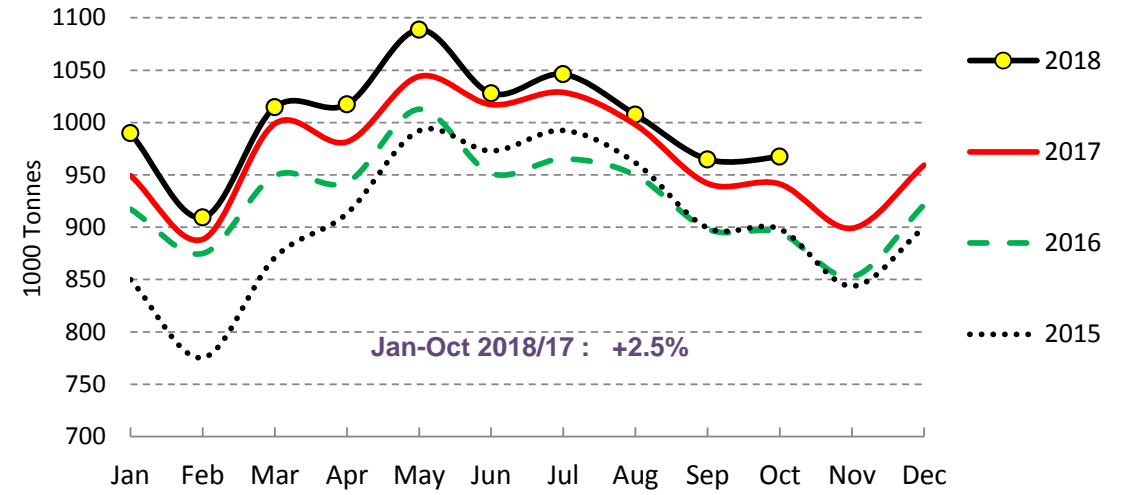
Cows' milk collected - IT



Source : Estat, Newcronos , AGEA

Last update : Jan-Oct

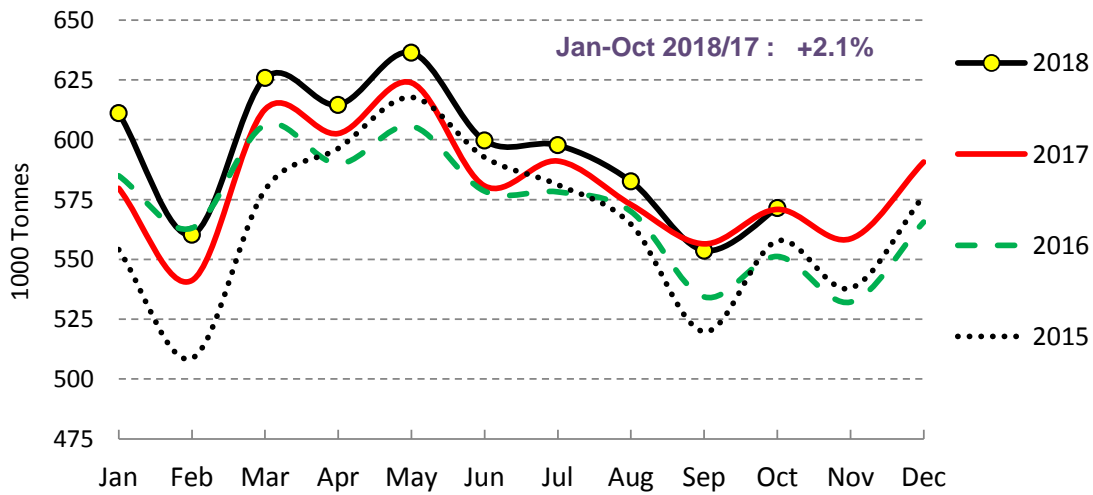
Cows' milk collected - PL



Source : Estat, Newcronos

Last update : Jan-Oct

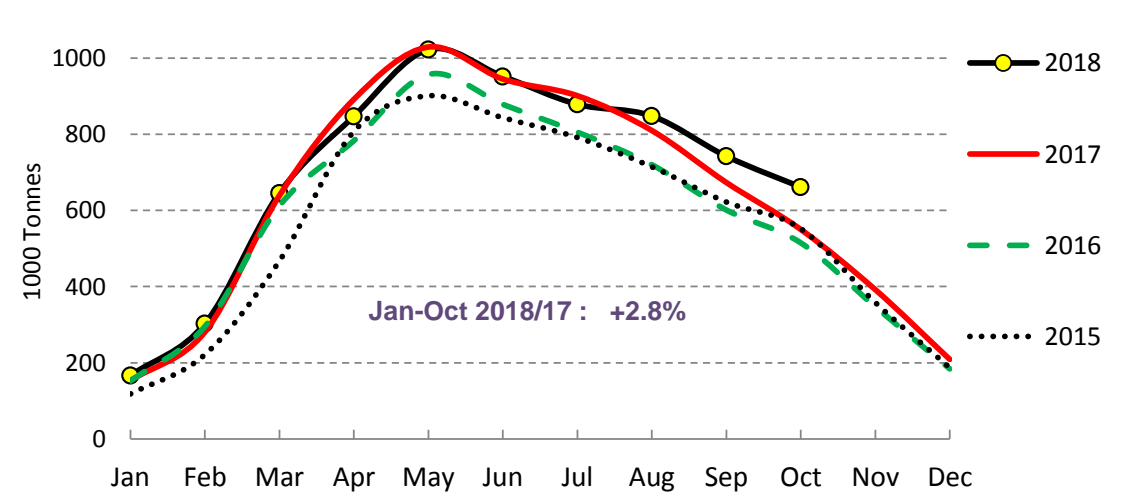
Cows' milk collected - ES



Source : Estat, Newcronos

Last update : Jan-Oct

Cows' milk collected - IE



Source : Estat, Newcronos

Last update : Jan-Oct

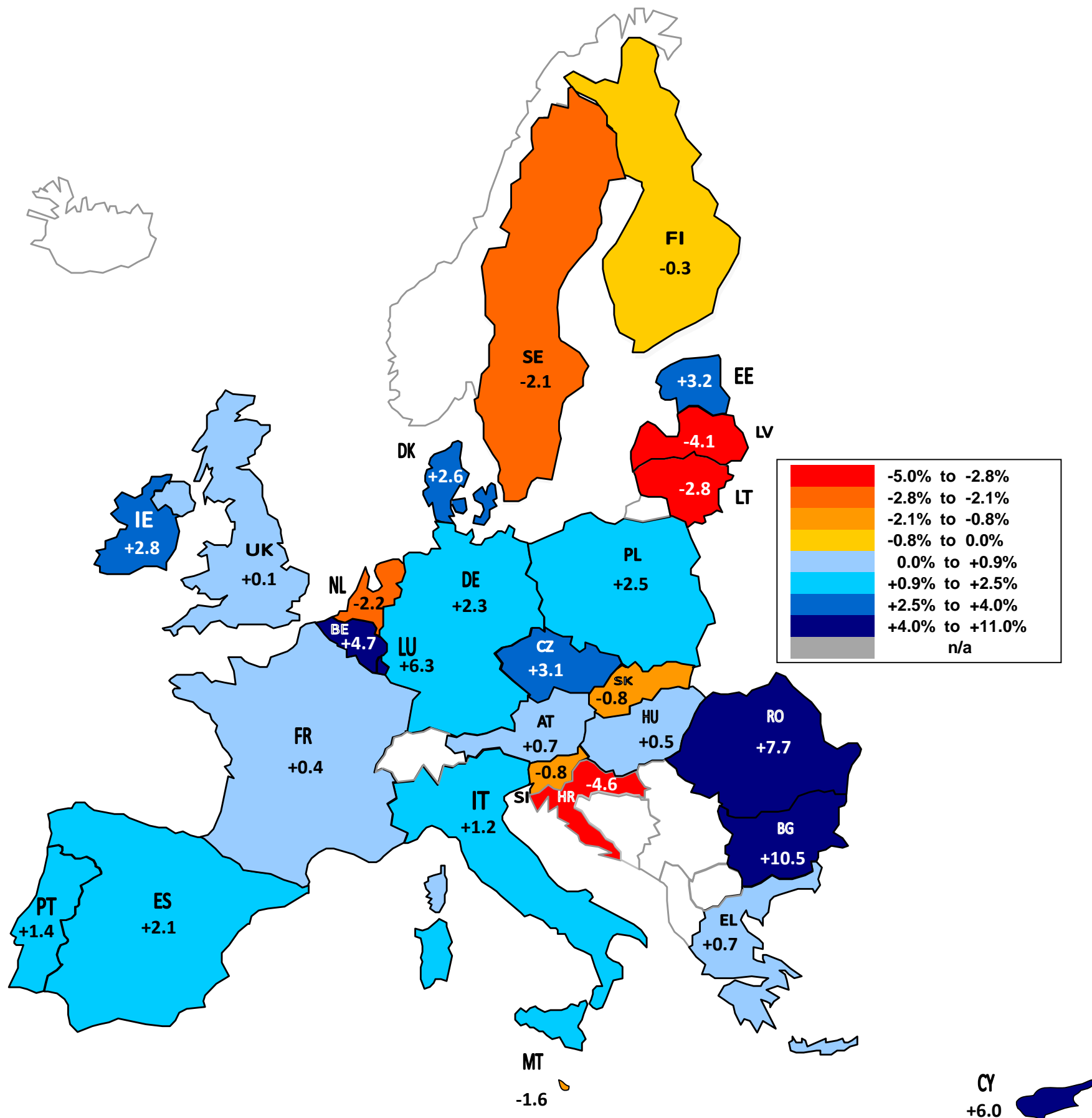
EU Cow's Milk collected

comparison of the last available month with the same month of the previous year

Oct 18 compared to Oct 17					Oct 17 compared to Oct 16					Oct 16 compared to Oct 15				
Rank	evolution in %		evolution in 1000 Tons		Rank	evolution in %		evolution in 1000 Tons		Rank	evolution in %		evolution in 1000 Tons	
	MS	%	MS	Tons		MS	%	MS	Tons		MS	%	MS	Tons
1.	IE	+ 20.2%	IE	+ 111	1.	CY	+ 19.0%	DE	+ 123	1.	CY	+ 7.6%	IT	+ 30
2.	BG	+ 8.3%	PL	+ 26	2.	RO	+ 12.9%	FR	+ 110	2.	MT	+ 3.9%	NL	+ 22
3.	RO	+ 7.9%	BE	+ 11	3.	BG	+ 12.9%	UK	+ 85	3.	IT	+ 3.5%	CY	+ 1
4.	EL	+ 5.7%	DK	+ 9	4.	LU	+ 11.1%	PL	+ 47	4.	NL	+ 2.0%	SI	+ 0
5.	CY	+ 3.7%	RO	+ 7	5.	BE	+ 10.6%	IT	+ 43	5.	SI	+ 1.0%	MT	+ 0
6.	BE	+ 3.3%	UK	+ 5	6.	AT	+ 8.3%	IE	+ 35	6.	BG	+ 0.1%	BG	+ 0
7.	MT	+ 3.2%	BG	+ 4	7.	UK	+ 7.4%	BE	+ 32	7.	PL	- 0.4%	LU	- 0
8.	PL	+ 2.8%	EL	+ 3	8.	EE	+ 7.3%	DK	+ 23	8.	HU	- 0.7%	RO	- 1
9.	LU	+ 2.2%	CZ	+ 2	9.	IE	+ 6.8%	AT	+ 20	9.	RO	- 1.1%	HU	- 1
10.	DK	+ 2.0%	CY	+ 1	10.	FR	+ 5.8%	ES	+ 20	10.	ES	- 1.2%	EL	- 1
11.	CZ	+ 0.8%	LU	+ 1	11.	DK	+ 5.3%	NL	+ 18	11.	CZ	- 1.5%	LV	- 1
12.	UK	+ 0.4%	ES	+ 1	12.	PL	+ 5.2%	RO	+ 10	12.	LT	- 1.5%	LT	- 2
13.	EE	+ 0.3%	EE	+ 0	13.	DE	+ 4.9%	CZ	+ 8	13.	LU	- 1.6%	HR	- 3
14.	ES	+ 0.1%	MT	+ 0	14.	IT	+ 4.8%	BG	+ 5	14.	FI	- 1.8%	EE	- 3
15.	DE	- 0.5%	PT	- 1	15.	ES	+ 3.6%	EE	+ 4	15.	LV	- 1.9%	FI	- 3
16.	PT	- 0.7%	SK	- 1	16.	CZ	+ 3.4%	PT	+ 4	16.	EL	- 2.2%	CZ	- 4
17.	HU	- 1.3%	SI	- 1	17.	SK	+ 3.4%	LU	+ 3	17.	DK	- 2.7%	PL	- 4
18.	FI	- 2.0%	HU	- 2	18.	PT	+ 2.7%	CY	+ 3	18.	DE	- 3.7%	SK	- 5
19.	SK	- 2.3%	LV	- 2	19.	SI	+ 2.2%	HU	+ 2	19.	SE	- 4.4%	ES	- 7
20.	SE	- 2.4%	HR	- 3	20.	HU	+ 2.0%	SK	+ 2	20.	AT	- 4.4%	PT	- 9
21.	SI	- 3.2%	FI	- 4	21.	NL	+ 1.6%	FI	+ 2	21.	EE	- 5.0%	SE	- 10
22.	LT	- 3.3%	LT	- 4	22.	HR	+ 1.2%	SI	+ 1	22.	PT	- 6.0%	AT	- 11
23.	FR	- 3.7%	SE	- 5	23.	FI	+ 1.1%	HR	+ 0	23.	IE	- 6.8%	DK	- 12
24.	LV	- 3.7%	AT	- 13	24.	SE	+ 0.1%	SE	+ 0	24.	HR	- 6.8%	IE	- 37
25.	IT	- 4.5%	DE	- 13	25.	EL	- 0.4%	EL	- 0	25.	SK	- 7.3%	BE	- 41
26.	AT	- 5.0%	IT	- 43	26.	LV	- 0.4%	MT	- 0	26.	FR	- 7.8%	DE	- 97
27.	NL	- 5.5%	NL	- 64	27.	LT	- 1.8%	LV	- 0	27.	UK	- 7.9%	UK	- 97
28.	HR	- 7.4%	FR	- 74	28.	MT	- 7.9%	LT	- 2	28.	BE	- 12.0%	FR	- 161
	EU28	- 0.4%	EU28	- 52		EU28	+ 5.0%	EU28	+ 598		EU28	- 3.6%	EU28	- 455

EU Milk Deliveries compared to last period (in %)

(Jan - Oct 2018 / Jan - Oct 2017)

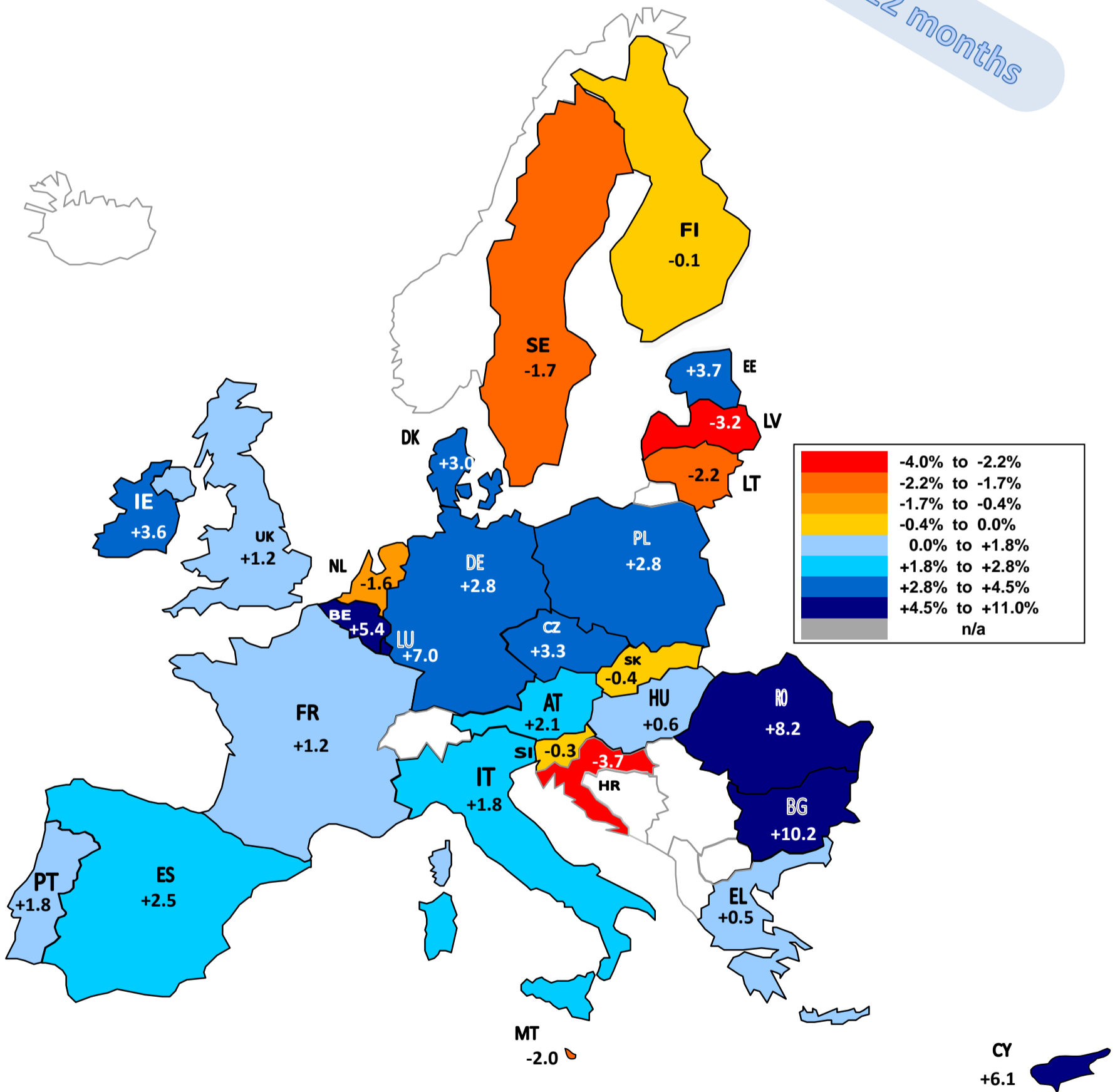


Source : MS' Communications to Eurostat, FEQA, AGEA, Reg.479/2010.1(a)1

EU Milk Deliveries compared to last period (in %)

(Nov 2017 - Oct 2018 / Nov 2016 - Oct 2017)

Last 12 months



Source : MS' Communications to Eurostat, FEAGA, AGEA, Reg.479/2010.1(a)1