



EU PRICES of COW's RAW MILK in EURO/100 kg

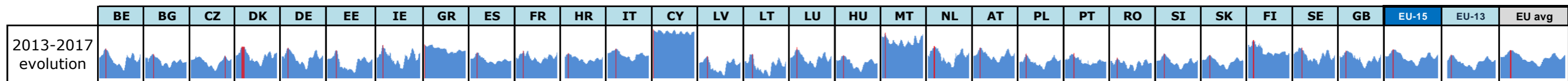
Source: Regulation (EU) No 2017/1185 Article 12(a) - Annex II.4(a) (prices of raw milk at real fat and protein content paid to milk producers)

	Belgium	Bulgaria	Czech Rep.	Denmark	Germany	Estonia	Ireland	Greece	Spain	France	Croatia	Italy	Cyprus	Latvia	Lithuania	Luxembourg	Hungary	Malta	Netherlands	Austria	Poland	Portugal	Romania	Slovenia	Slovakia	Finland	Sweden	U.K.	Weighted averages			% compared to previous month (*)	
	EU-15	EU-13	EU (weight. avg.)																														
2017m01	34.97	30.94	27.90	35.37	34.13	32.66	35.45	38.71	30.68	34.23	31.69	36.25	57.14	31.01	30.32	35.18	29.53	47.16	34.50	34.88	30.21	28.31	30.82	28.58	29.15	37.41	37.00	30.39	33.96	30.27	33.44	+ 1.1%	Jan-17
2017m02	34.10	30.95	28.79	36.45	33.97	32.55	34.18	37.37	30.68	33.26	31.85	36.43	56.28	30.00	29.71	34.57	29.78	45.59	35.00	34.88	30.57	28.32	30.16	28.55	29.52	37.28	37.90	31.25	33.86	30.46	33.38	- 0.2%	Feb-17
2017m03	33.73	30.88	29.26	36.85	33.56	32.13	31.66	37.93	30.49	32.61	31.37	36.64	55.27	29.50	28.59	34.41	29.56	45.07	36.00	34.83	30.52	28.70	29.66	28.68	29.51	37.17	37.88	30.81	33.58	30.32	33.12	- 0.8%	Mar-17
2017m04	33.44	30.00	29.88	35.76	33.49	31.06	31.66	37.96	30.39	33.61	31.06	36.32	55.12	29.23	27.73	33.81	29.62	44.87	36.00	34.58	30.66	28.72	28.79	28.66	29.79	37.08	36.70	30.81	33.64	30.30	33.17	+ 0.2%	Apr-17
2017m05	32.95	29.33	30.42	34.68	33.83	30.76	32.63	37.90	30.29	32.43	30.87	36.62	54.42	28.82	26.79	32.98	29.50	44.81	36.00	34.68	30.95	28.60	26.90	28.47	29.86	36.94	35.34	30.41	33.42	30.29	32.97	- 0.6%	May-17
2017m06	33.19	28.98	31.02	34.82	34.38	31.55	33.60	38.02	30.10	32.32	30.54	36.62	54.67	29.15	26.64	32.86	29.51	45.17	36.75	35.82	31.25	28.74	26.28	28.97	29.99	36.76	34.54	29.64	33.57	30.51	33.13	+ 0.5%	Jun-17
2017m07	34.32	29.31	31.54	36.58	35.89	32.78	34.96	38.02	30.10	34.04	30.67	36.78	55.30	29.81	27.74	33.63	29.88	46.73	37.25	36.76	31.61	28.47	26.66	29.85	30.49	37.50	36.59	30.53	34.70	31.00	34.17	+ 3.1%	Jul-17
2017m08	36.06	29.84	32.08	37.51	37.44	32.94	37.68	38.83	30.68	35.11	29.95	37.15	55.96	30.05	28.65	35.02	30.47	50.85	38.50	37.70	32.57	29.85	26.91	30.56	30.91	37.66	37.99	30.97	35.83	31.72	35.25	+ 3.1%	Aug-17
2017m09	37.70	30.60	33.08	38.44	39.39	33.97	40.79	39.34	31.26	36.60	30.84	37.70	56.58	31.79	31.49	37.27	31.17	53.35	40.50	39.74	33.71	30.77	29.46	32.38	31.97	38.22	40.20	32.82	37.46	33.01	36.83	+ 4.5%	Sep-17
2017m10	37.51	31.27	34.37	39.23	40.34	34.40	41.95	40.04	31.84	36.17	32.24	37.68	57.14	32.69	33.99	38.18	31.93	53.12	41.75	40.99	34.46	31.39	31.37	32.95	33.06	38.88	40.87	34.52	38.11	34.02	37.53	+ 1.9%	Oct-17
2017m11	37.01	31.84	35.33	39.24	40.52	34.17	41.86	40.60	32.52	36.40	32.34	38.02	56.77	32.73	33.20	38.69	32.32	51.17	41.75	41.44	35.80	32.01	31.29	33.22	33.61	38.96	40.25	34.92	38.30	34.80	37.80	+ 0.7%	Nov-17
2017m12	35.67	32.29	35.40	37.89	39.96	33.17	40.59	40.74	32.43	36.01	33.12	38.08	55.96	32.59	32.23	38.49	32.45	49.16	41.50	41.81	36.07	32.30	31.97	32.97	33.97	38.78	40.05	34.79	37.90	34.91	37.48	- 0.9%	Dec-17
2018m01	31.59	31.99	34.48	35.86	36.76	31.86	39.43	40.48	31.94	35.27	33.21	36.57	55.69	30.72	30.76	34.89	32.13	46.97	37.50	40.27	34.02	31.16	32.11	31.10	33.71	39.17	37.56	33.35	35.90	33.51	35.56	- 5.1%	Jan-18
2018m02	31.37	30.77	33.82	33.44	34.88	30.24	37.00	40.37	31.94	35.04	33.40	35.98	54.92	28.18	29.38	33.56	31.52	46.72	35.75	38.18	32.95	31.39	31.94	29.88	33.02	39.15	35.77	32.31	34.73	32.51	34.41	- 3.2%	Feb-18
2018m03	31.01	30.03	32.82	33.29	34.21	29.97	33.31	39.98	31.46	33.85	33.08	35.81	54.09	27.48	28.72	31.98	30.74	46.35	35.50	36.96	32.41	30.18	30.70	29.22	32.42	39.28	33.46	31.32	33.85	31.85	33.57	- 2.5%	Mar-18
2018m04	30.17	29.12	32.05	33.30	32.99	29.64	31.08	39.40	30.87	32.90	32.33	35.24	54.02	26.93	26.83	30.81	29.91	46.79	34.50	35.81	31.96	30.99	29.68	28.58	31.35	39.00	32.32	30.51	32.91	31.17	32.66	- 2.7%	Apr-18
2018m05	29.58	29.07	31.21	34.23	32.38	29.23	31.17	39.17	30.68	32.43	31.83	34.89	54.37	26.74	25.96	29.88	28.90	49.13	34.00	35.02	30.69	30.36	28.32	28.74	30.65	36.37	31.68	29.63	32.40	30.19	32.09	- 1.7%	May-18
2018m06	30.44	29.04	30.78	36.25	32.56	29.65	31.66	39.51	30.39	32.63	31.60	34.86	55.49	26.98	25.59	30.31	28.07	50.03	34.25	34.55	30.40	30.31	28.21	29.18	30.59	36.06	31.63	30.06	32.66	29.94	32.27	+ 0.6%	Jun-18
2018m07	30.17	29.36	30.79	37.17	33.19	30.18	31.76	39.53	30.29	33.70	32.16	35.25	56.67	27.65	25.79	31.36	28.04	51.57	35.75	35.33	30.38	30.07	28.45	29.78	30.77	35.83	33.02	31.26	33.42	30.05	32.94	+ 2.1%	Jul-18
2018m08	31.82	29.38	31.17	37.15	33.83	30.34	33.41	39.59	30.49	34.63	31.65	35.26	56.68	27.97	25.74	32.49	28.33	53.21	35.75	35.12	30.72	29.79	29.00	29.89	30.82	36.08	33.29	33.09	34.12	30.32	33.57	+ 1.9%	Aug-18
2018m09	33.73	29.72	31.96	37.95	35.43	31.61	37.00	39.83	30.78	35.98	33.00	35.44	56.83	28.95	28.15	34.12	28.69	53.21	37.00	36.45	31.60	30.03	28.82	30.96	31.71	37.40	34.30	34.30	35.43	31.22	34.83	+ 3.7%	Sep-18
2018m10	36.46	29.75	32.18	37.94	35.43	32.00	37.93	40.00	30.78	38.27	34.06	35.58	56.83	29.34	30.17	35.17	28.76	54.54	38.00	37.80	31.73	30.03	28.62	31.38	30.88	37.60	35.93	36.29	36.42	31.48	35.71	+ 2.5%	Oct-18

 : Estimations DG AGRI-G3
 : Estimations based on National statistics
 : "estimated" prices by MS (indicator of price movement, not to be relied upon to forecast prices)

Price of Sep 18 compared to :

	BE	BG	CZ	DK	DE	EE	IE	GR	ES	FR	HR	IT	CY	LV	LT	LU	HU	MT	NL	AT	PL	PT	RO	SI	SK	FI	SE	GB	EU-15	EU-13	EU avg
Aug 18	+ 6.0%	+ 1.2%	+ 2.5%	+ 2.2%	+ 4.7%	+ 4.2%	+ 10.7%	+ 0.6%	+ 1.0%	+ 3.9%	+ 4.3%	+ 0.5%	+ 0.3%	+ 3.5%	+ 9.4%	+ 5.0%	+ 1.3%	idem	+ 3.5%	+ 3.8%	+ 2.9%	+ 0.8%	- 0.6%	+ 3.6%	+ 2.9%	+ 3.7%	+ 4.2%	+ 3.7%	+ 3.9%	+ 3.0%	+ 3.7%
Sep 17	- 11%	- 3%	- 3%	- 1%	- 10%	- 7%	- 9%	+ 1%	- 2%	- 2%	+ 7%	- 6%	+ 0%	- 9%	- 11%	- 8%	- 8%	- 0%	- 9%	- 8%	- 6%	- 2%	- 2%	- 4%	- 1%	- 2%	- 14%	+ 5%	- 5%	- 5%	- 5%

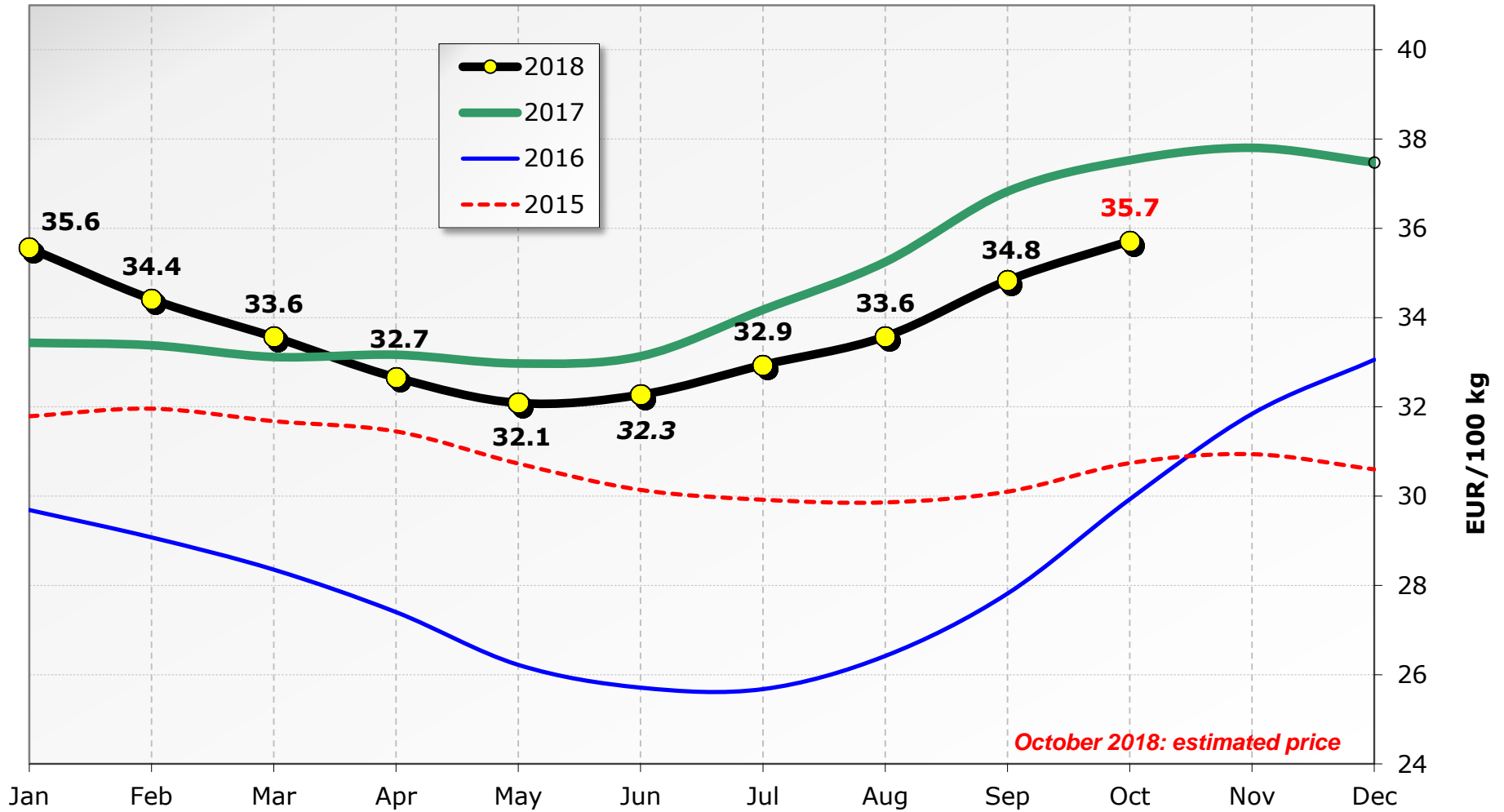


Red lines show maximum values

	BE	BG	CZ	DK	DE	EE	IE	GR	ES	FR	HR	IT	CY	LV	LT	LU	HU	MT	NL	AT	PL	PT	RO	SI	SK	FI	SE	GB	EU-15	EU-13	EU avg
Max since Jan 2013	41.9 Dec 13	37.0 Mar 14	35.4 Dec 17	43.5 Nov 13	42.5 Nov 13	40.3 Mar 14	44.9 Nov 13	45.5 Jan 13	38.3 Dec 13	39.8 Jan 14	37.8 Dec 13	41.8 Mar 14	58.9 Jan 13	35.2 Mar 14	37.0 Feb 14	42.9 Dec 13	35.7 Jan 14	56.1 Jul 13	44.0 Nov 13	42.7 Dec 13	37.2 Dec 13	37.8 Apr 14	33.8 Dec 13	37.3 Feb 14	36.0 Feb 14	49.5 Oct 13	42.5 Mar 14	40.0 Nov 13	41.0 Nov 13	36.4 Dec 13	40.3 Dec 13
Min since Jan 2013	22.1 Jul 16	24.6 Jun 16	22.0 Jul 16	26.1 Jul 16	23.2 Jun 16	20.0 Jul 16	23.5 Jun 16	37.4 Jun 16	27.8 Jul 16	28.5 Jul 16	27.9 Jul 16	30.5 Aug 16	54.0 Apr 18	17.7 Jul 16	16.9 Jun 16	24.7 Jul 16	21.0 Jul 16	42.9 Apr 16	25.0 May 16	29.3 Jun 16	23.1 Jun 16	26.8 Aug 16	21.6 Jun 16	23.2 Jun 16	23.1 Jul 16	35.4 Jul 16	27.2 Jul 16	24.0 Jul 16	26.2 Jul 16	22.5 Jun 16	25.7 Jul 16

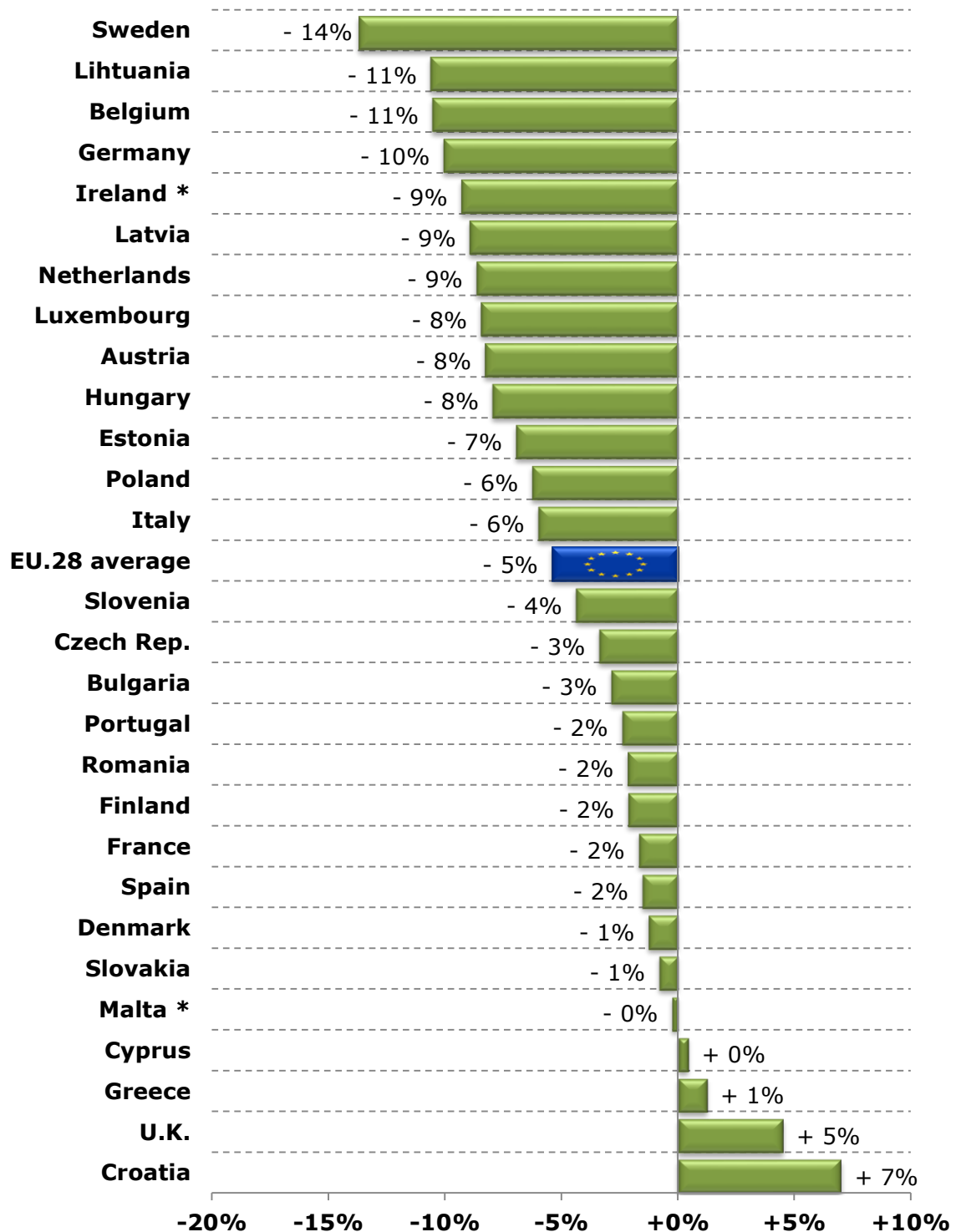
Milk Prices paid to the Producers

EU (weight. avg.)



Source : Member States Reg. (EU) No 2017/1185 Article 12(a) - Annex II.4(a)

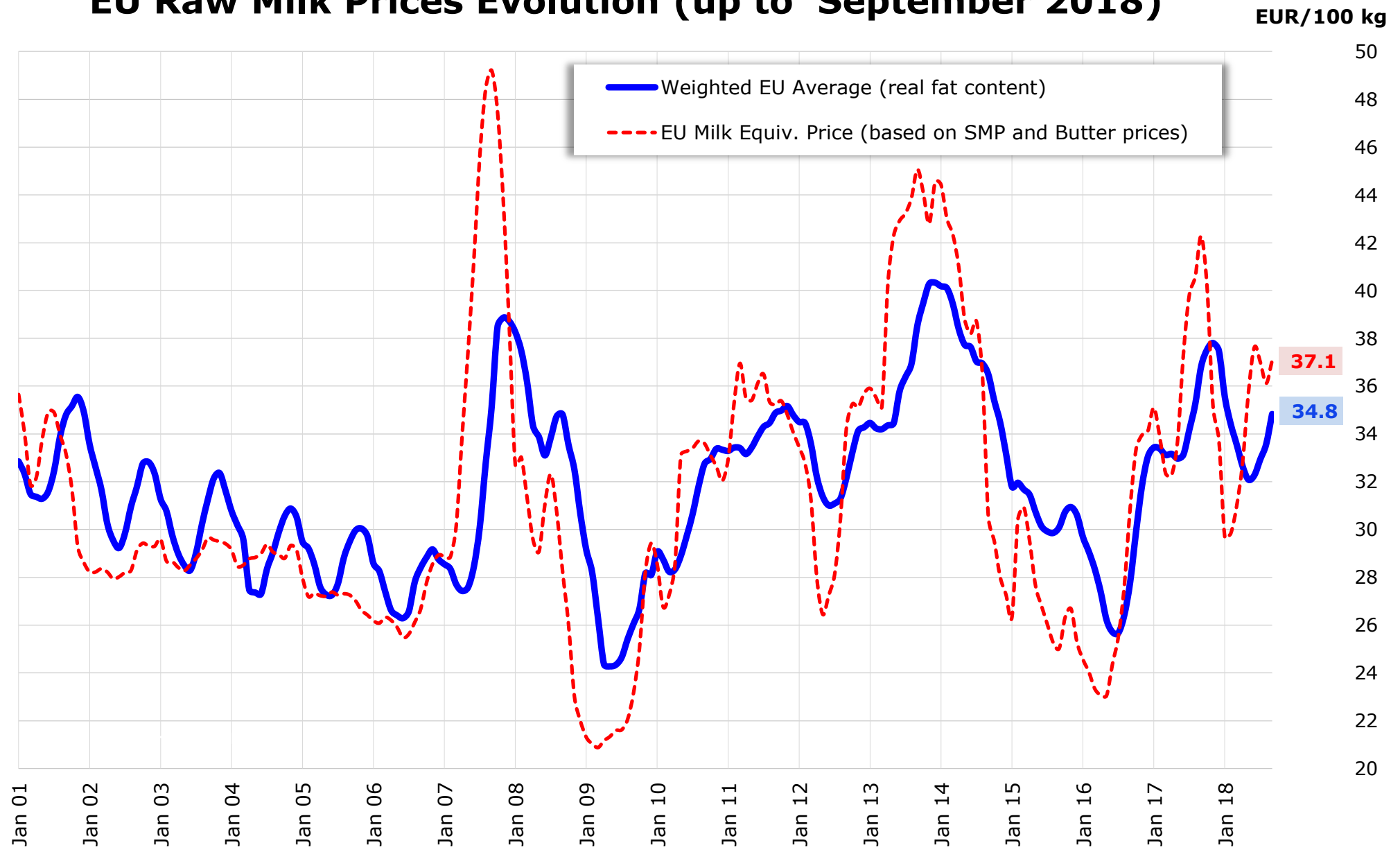
Raw Milk Price evolution in September 2018 compared to September 2017



* : estimated figures for Sep 2018

Source : Member States (Reg. (EU) No 2017/1185 Article 12(a) - Annex II.4(a))

EU Raw Milk Prices Evolution (up to September 2018)



Source : MS' communications under Reg. (EU) No 2017/1185 Article 12(a) - Annex II.4(a)

EU MILK PRICES

(Sep 2018 vs Sep 2017)

Source : Member States (Regulation (EU) No 2017/1185 Article 12(a) - Annex II.4(a))

