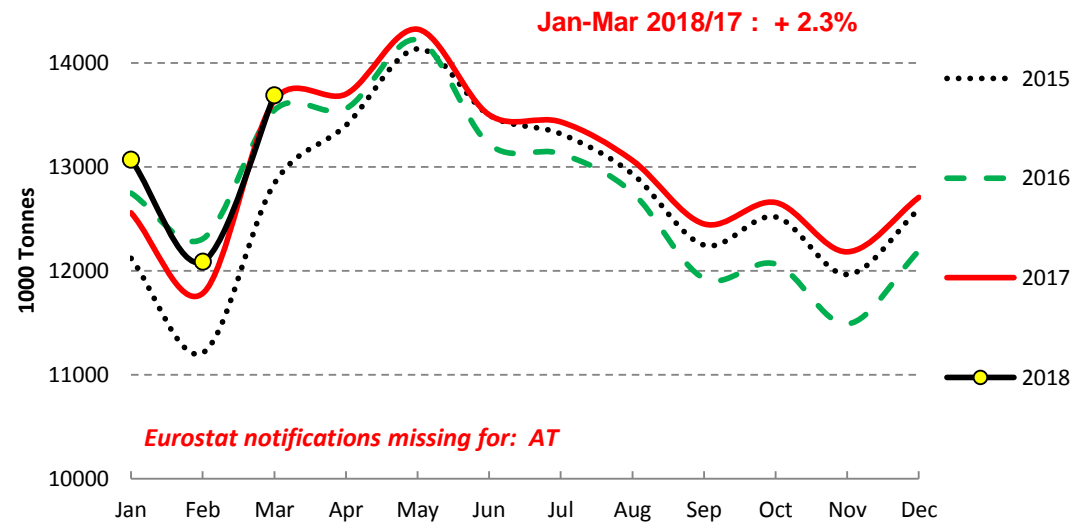


## EU Cow's Milk collected

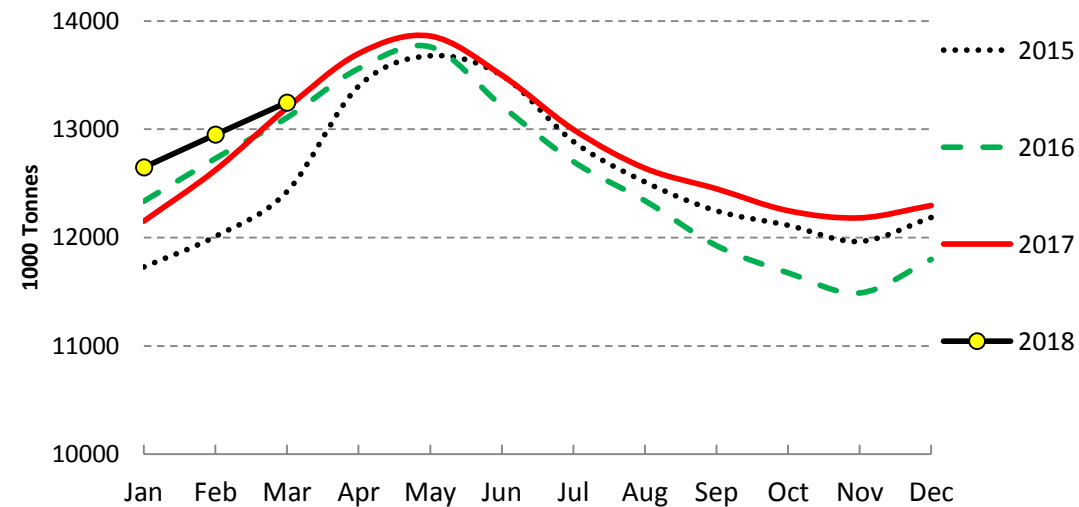
EU - Cows' milk collected



Source : Estat - Newcronos

Last update : Jan-Mar

EU - Cows' milk collected ( 30d ajusted months )

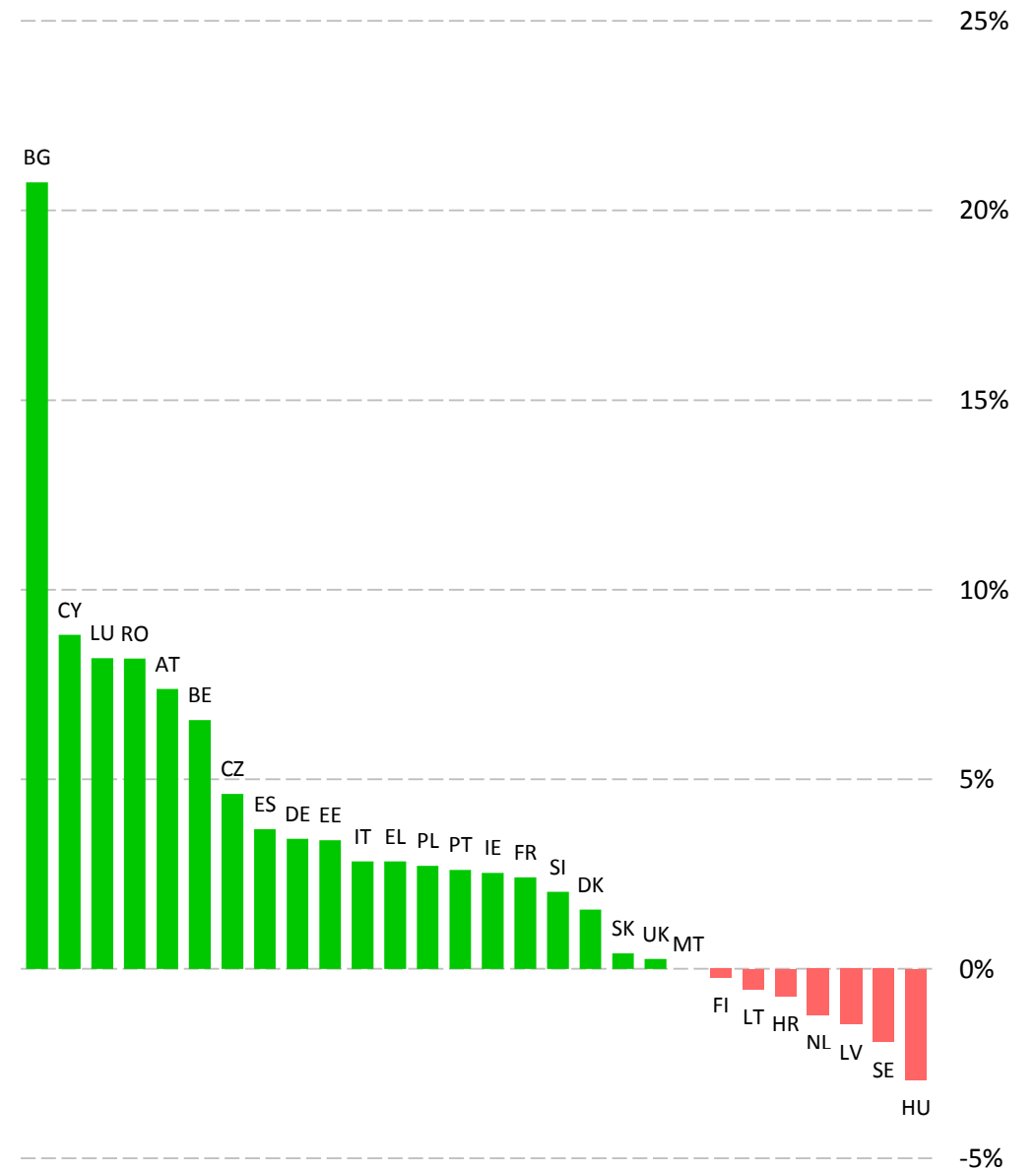


Source : Estat - Newcronos

Last update : Jan-Mar

## Cows' milk collected

2018/17 Jan-Mar ( y/y %Chg )

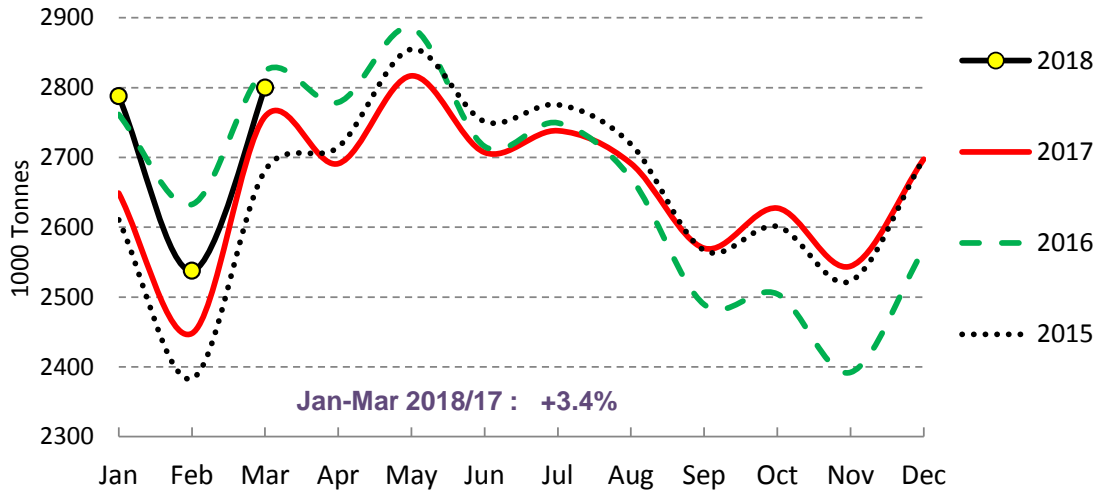


Source : Estat - Newcronos

Last update : Jan-Mar

## EU Cows' milk collected - MAIN PRODUCERS (1/2)

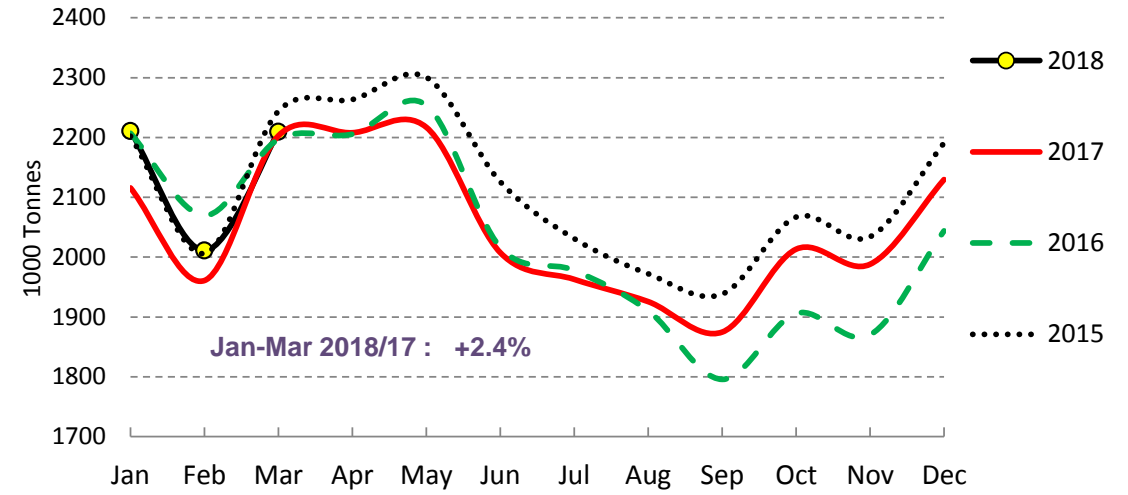
### Cows' milk collected - DE



Source : Estat, Newcronos

Last update : Jan-Mar

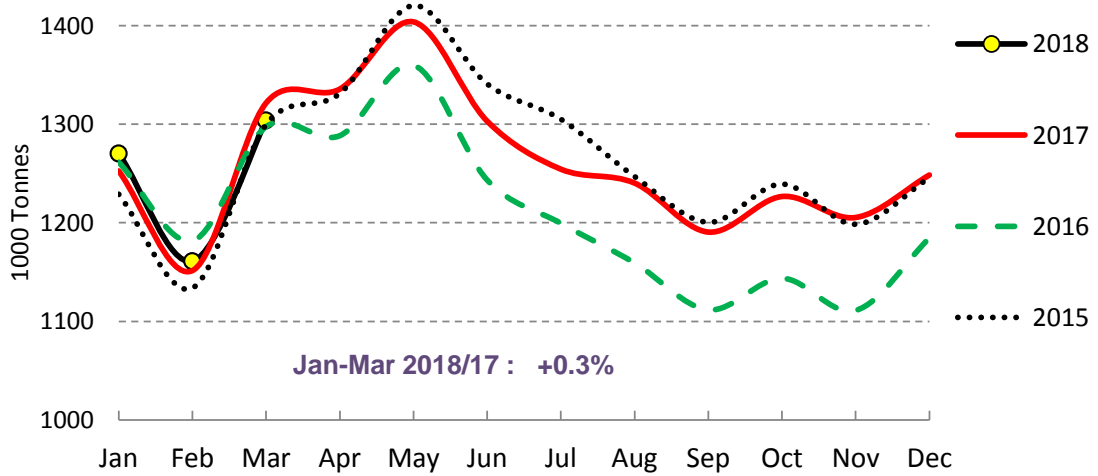
### Cows' milk collected - FR



Source : Estat, Newcronos

Last update : Jan-Mar

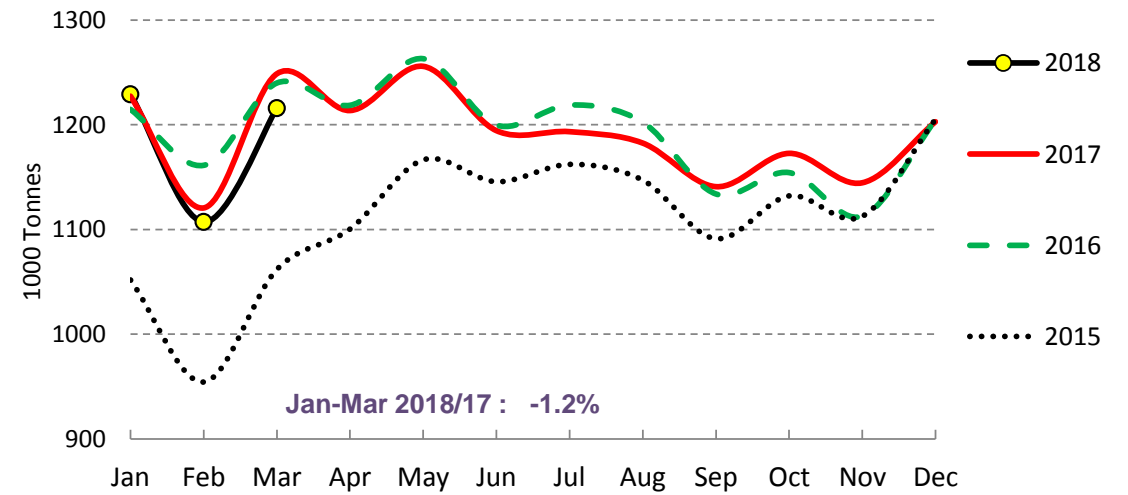
### Cows' milk collected - UK



Source : Estat, Newcronos

Last update : Jan-Mar

### Cows' milk collected - NL

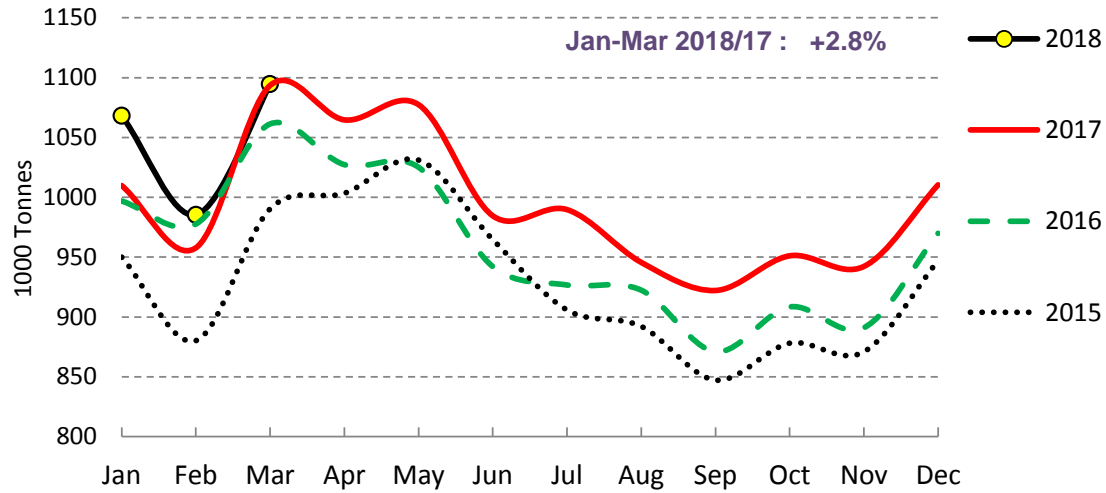


Source : Estat, Newcronos

Last update : Jan-Mar

## EU Cows' milk collected - MAIN PRODUCERS (2/2)

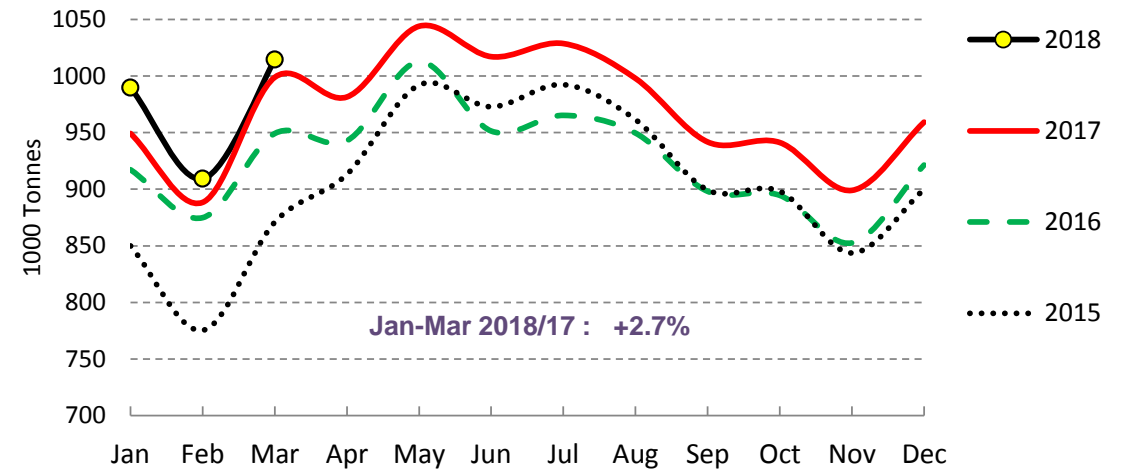
### Cows' milk collected - IT



Source : Estat, Newcronos , AGEA

Last update : Jan-Mar

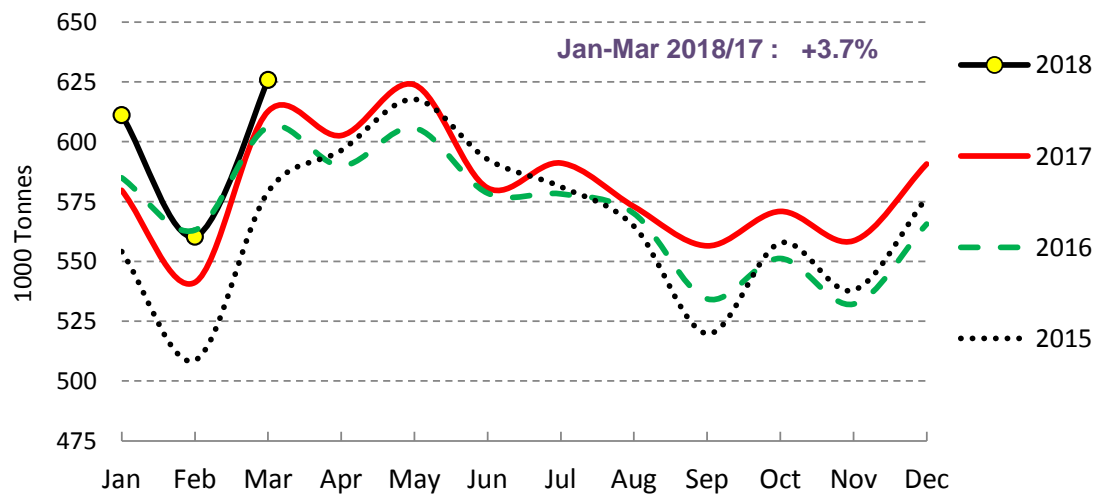
### Cows' milk collected - PL



Source : Estat, Newcronos

Last update : Jan-Mar

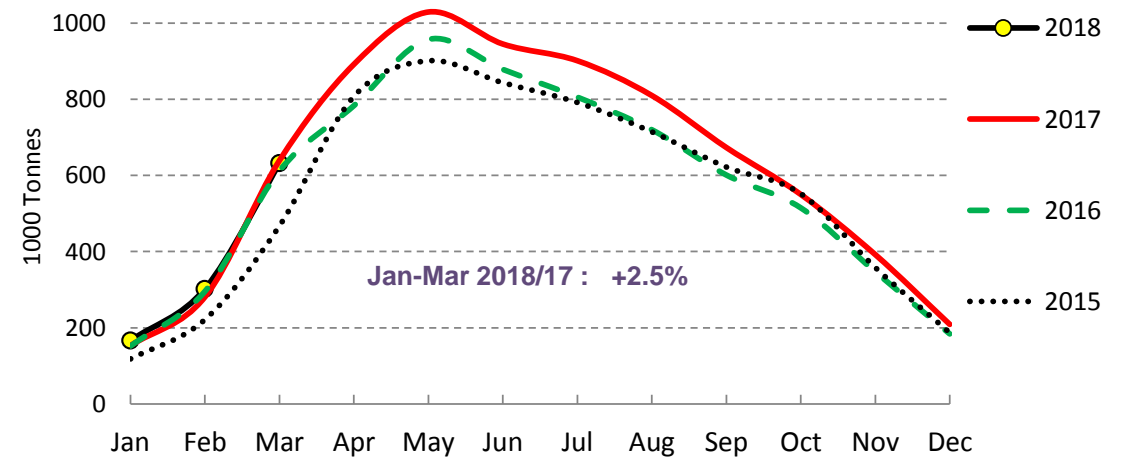
### Cows' milk collected - ES



Source : Estat, Newcronos

Last update : Jan-Mar

### Cows' milk collected - IE



Source : Estat, Newcronos

Last update : Jan-Mar

## EU Cow's Milk collected

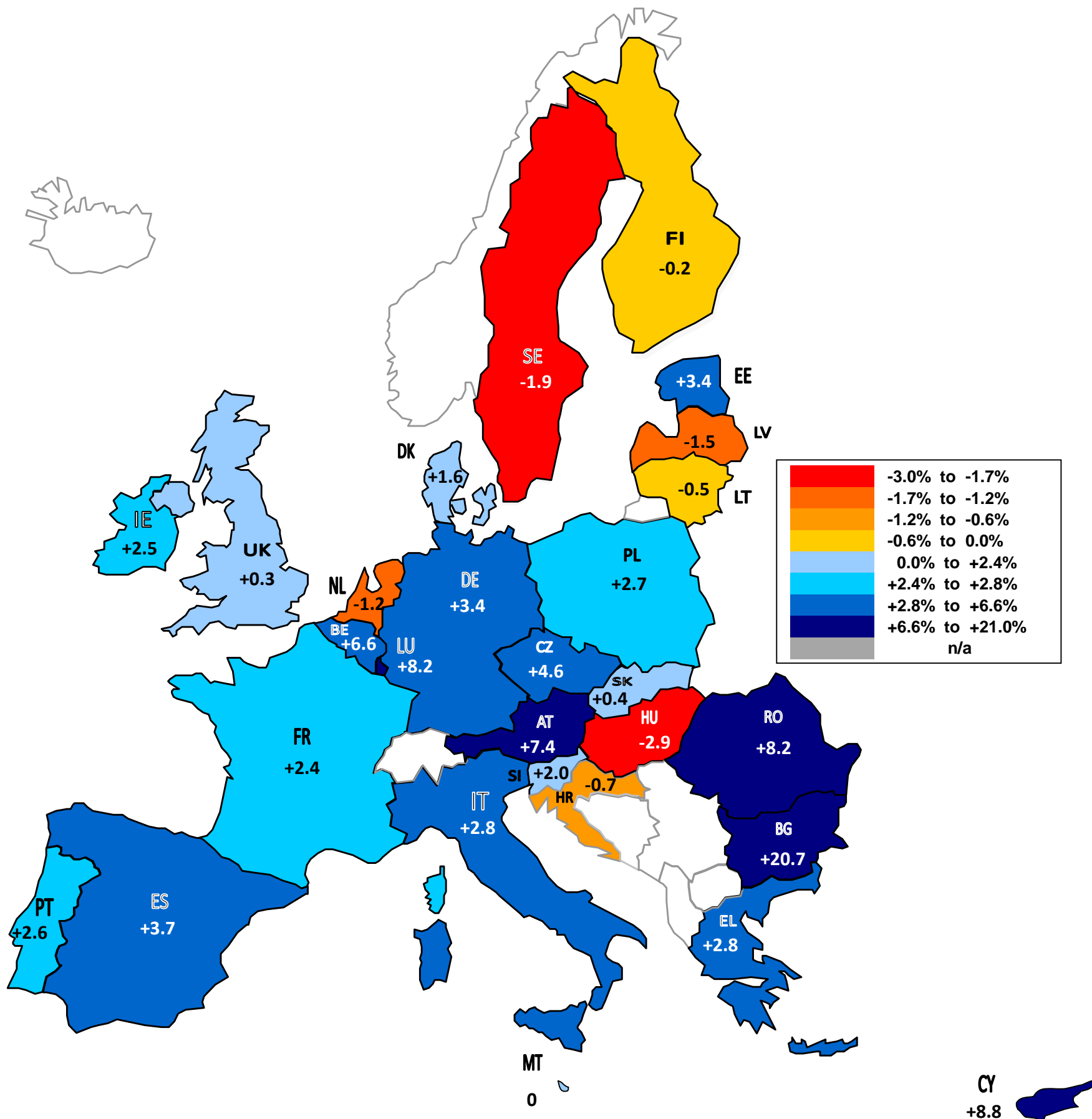
*comparison of the last available month with the same month of the previous year*

Mar 18 compared to Mar 17					Mar 17 compared to Mar 16					Mar 16 compared to Mar 15				
Rank	evolution in %		evolution in 1000 Tons		Rank	evolution in %		evolution in 1000 Tons		Rank	evolution in %		evolution in 1000 Tons	
	MS	%	MS	Tons		MS	%	MS	Tons		MS	%	MS	Tons
1.	BG	+ 9.3%	DE	+ 41	1.	CY	+ 15.8%	PL	+ 50	1.	IE	+ 31.0%	NL	+ 178
2.	CY	+ 6.7%	BE	+ 18	2.	RO	+ 5.9%	IT	+ 32	2.	CY	+ 28.2%	IE	+ 145
3.	LU	+ 5.6%	PL	+ 16	3.	PL	+ 5.2%	IE	+ 27	3.	LU	+ 21.8%	DE	+ 143
4.	BE	+ 5.2%	AT	+ 13	4.	IE	+ 4.4%	UK	+ 24	4.	BG	+ 20.2%	PL	+ 78
5.	RO	+ 4.8%	ES	+ 13	5.	BG	+ 3.2%	NL	+ 9	5.	NL	+ 16.8%	IT	+ 71
6.	AT	+ 4.6%	FR	+ 7	6.	IT	+ 3.0%	ES	+ 7	6.	BE	+ 14.2%	BE	+ 43
7.	CZ	+ 2.5%	CZ	+ 6	7.	UK	+ 1.9%	FR	+ 6	7.	PL	+ 9.0%	DK	+ 33
8.	ES	+ 2.1%	BG	+ 5	8.	AT	+ 1.2%	RO	+ 5	8.	LV	+ 8.4%	ES	+ 27
9.	EE	+ 2.0%	RO	+ 4	9.	BE	+ 1.2%	BE	+ 4	9.	DK	+ 7.6%	AT	+ 13
10.	PL	+ 1.6%	LU	+ 2	10.	ES	+ 1.1%	AT	+ 3	10.	SI	+ 7.3%	BG	+ 8
11.	DE	+ 1.5%	CY	+ 1	11.	LU	+ 0.9%	CY	+ 3	11.	IT	+ 7.2%	LU	+ 6
12.	EL	+ 1.5%	EE	+ 1	12.	HU	+ 0.8%	BG	+ 2	12.	DE	+ 5.3%	LV	+ 5
13.	FR	+ 0.3%	IT	+ 1	13.	NL	+ 0.7%	DK	+ 1	13.	AT	+ 4.8%	CY	+ 4
14.	PT	+ 0.2%	EL	+ 1	14.	SI	+ 0.7%	HU	+ 1	14.	ES	+ 4.7%	SI	+ 3
15.	IT	+ 0.1%	PT	+ 0	15.	LV	+ 0.5%	PT	+ 0	15.	RO	+ 3.9%	CZ	+ 3
16.	MT	+ 0.0%	MT	+ 0	16.	EL	+ 0.4%	SI	+ 0	16.	MT	+ 3.7%	RO	+ 3
17.	SI	- 0.1%	SI	- 0	17.	EE	+ 0.3%	LV	+ 0	17.	EL	+ 2.4%	EL	+ 1
18.	DK	- 0.2%	DK	- 1	18.	DK	+ 0.3%	LU	+ 0	18.	EE	+ 1.5%	HU	+ 1
19.	FI	- 0.5%	FI	- 1	19.	PT	+ 0.3%	EL	+ 0	19.	CZ	+ 1.3%	EE	+ 1
20.	HU	- 1.1%	HU	- 2	20.	FR	+ 0.3%	EE	+ 0	20.	HU	+ 0.8%	LT	+ 0
21.	IE	- 1.1%	SK	- 2	21.	CZ	- 1.0%	MT	- 0	21.	LT	+ 0.3%	MT	+ 0
22.	UK	- 1.3%	HR	- 2	22.	LT	- 1.4%	SK	- 1	22.	FI	- 0.2%	FI	- 0
23.	LT	- 1.9%	LT	- 2	23.	SK	- 1.6%	LT	- 1	23.	UK	- 0.2%	HR	- 1
24.	SK	- 2.2%	LV	- 2	24.	FI	- 1.9%	HR	- 2	24.	SK	- 1.1%	SK	- 1
25.	NL	- 2.6%	IE	- 7	25.	SE	- 2.2%	CZ	- 2	25.	SE	- 1.1%	UK	- 2
26.	SE	- 3.2%	SE	- 8	26.	DE	- 2.3%	FI	- 4	26.	HR	- 1.7%	SE	- 3
27.	LV	- 3.5%	UK	- 17	27.	MT	- 3.3%	SE	- 6	27.	FR	- 2.1%	PT	- 7
28.	HR	- 4.3%	NL	- 33	28.	HR	- 3.5%	DE	- 66	28.	PT	- 4.1%	FR	- 47
	<b>EU28</b>	<b>+ 0.4%</b>	<b>EU28</b>	<b>+ 53</b>		<b>EU28</b>	<b>+ 0.7%</b>	<b>EU28</b>	<b>+ 92</b>		<b>EU28</b>	<b>+ 5.5%</b>	<b>EU28</b>	<b>+ 706</b>

*Eurostat notifications missing for: AT*

# EU Milk Deliveries compared to last period (in %)

(Jan - Mar 2018 / Jan - Mar 2017)

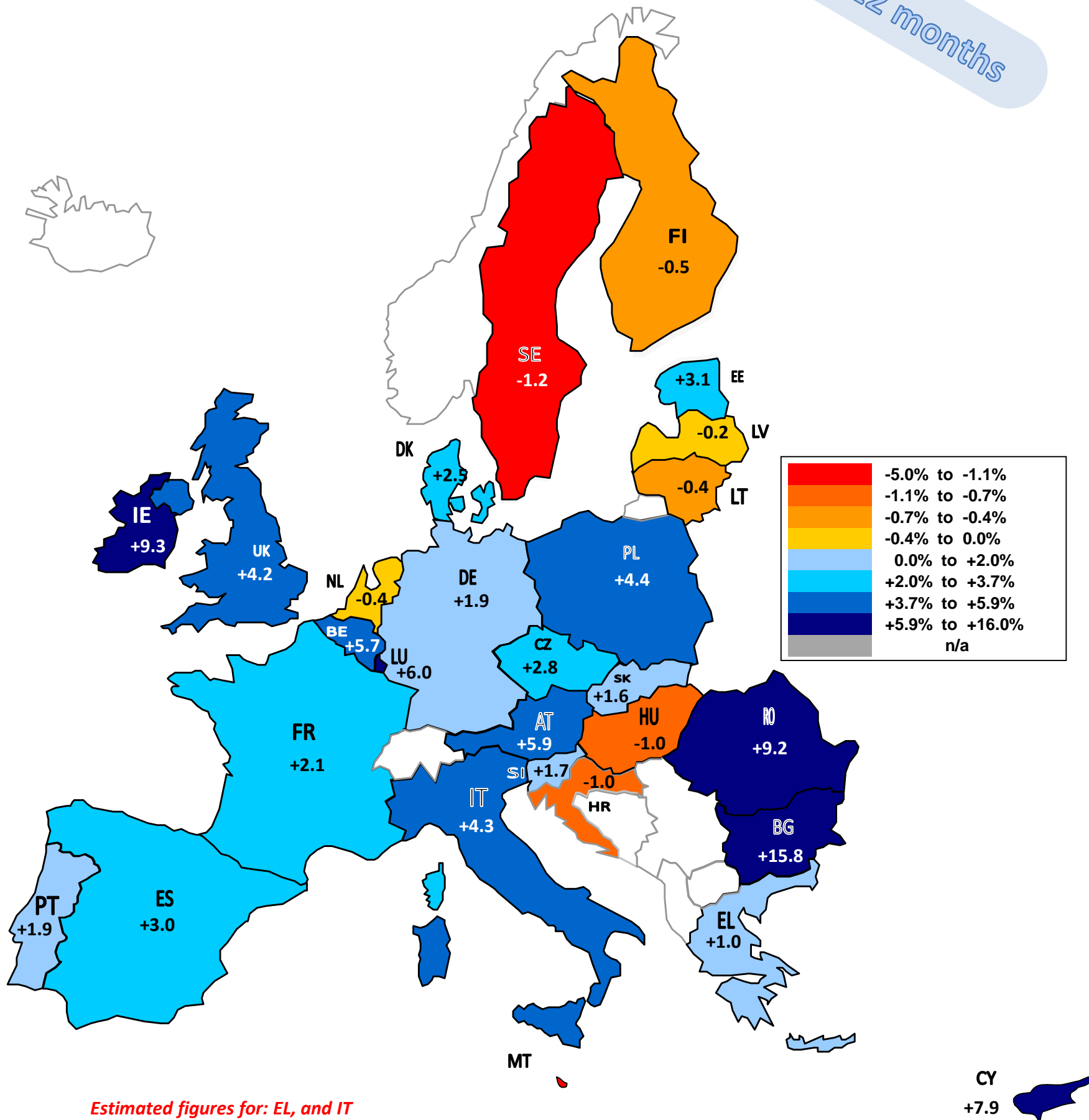


Source : MS' Communications to Eurostat, FEGA, AGEA, Reg.479/2010.1(a)1

# EU Milk Deliveries compared to last period (in %)

(Apr 2017 - Mar 2018 / Apr 2016 - Mar 2017)

Last 12 months



Source : MS' Communications to Eurostat, FEQA, AGEA, Reg.479/2010.1(a)1