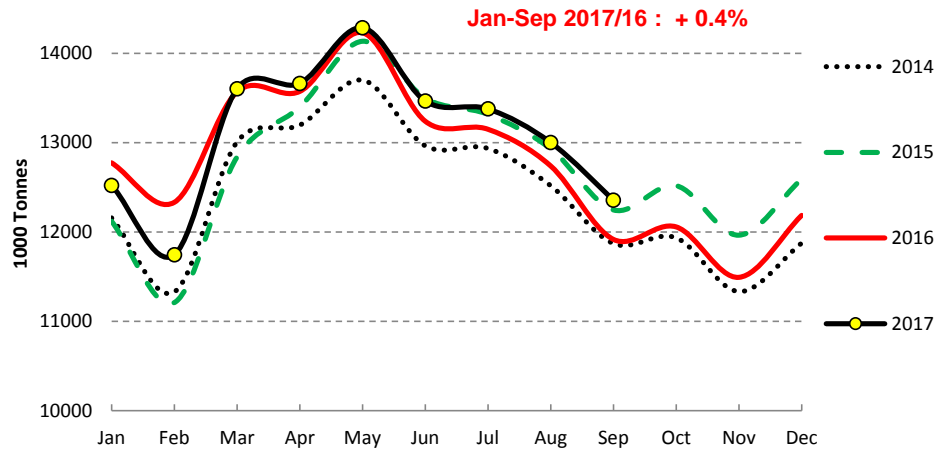


EU Cow's Milk collected

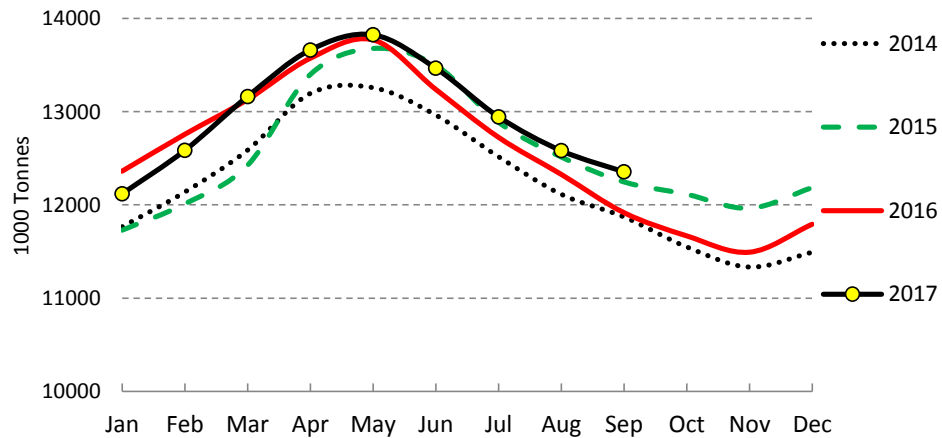
EU - Cows' milk collected



Source : EStat - Newcronos

Last update : Jan-Sep

EU - Cows' milk collected (30d ajusted months)

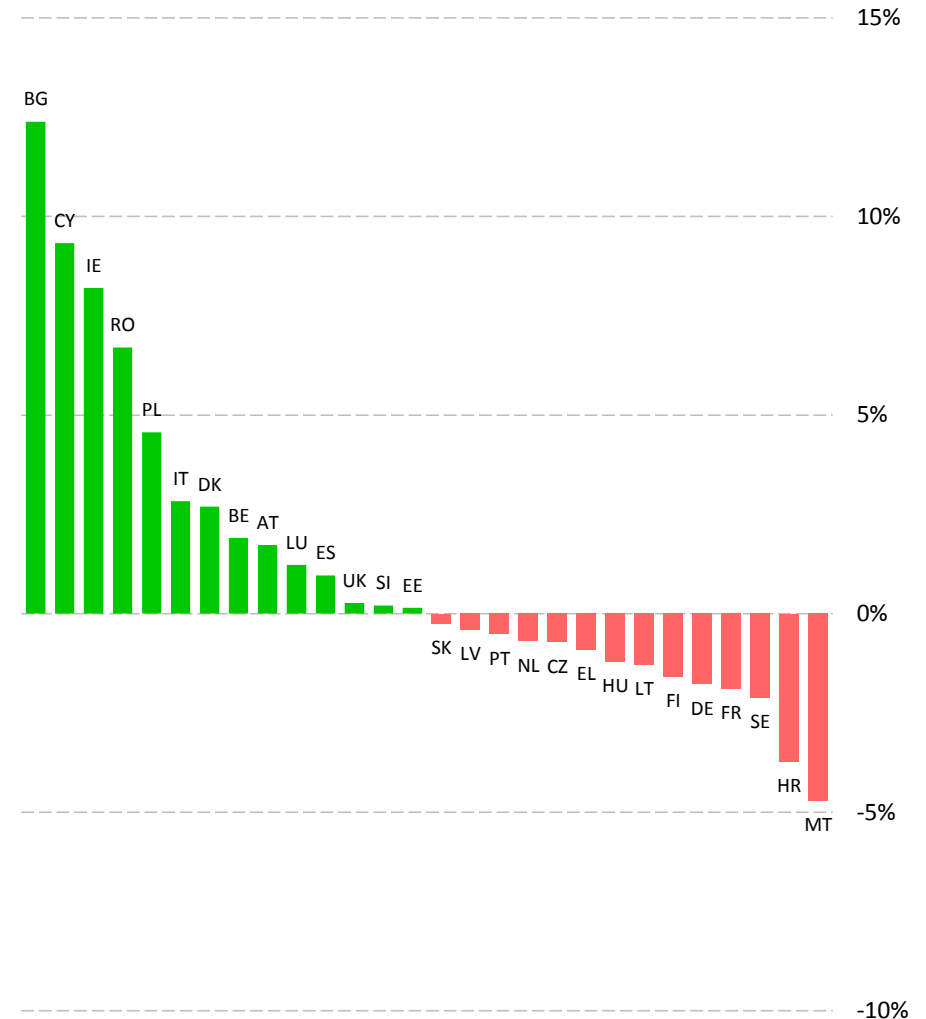


Source : EStat - Newcronos

Last update : Jan-Sep

Cows' milk collected

2017/16 Jan-Sep (y/y %Chg)

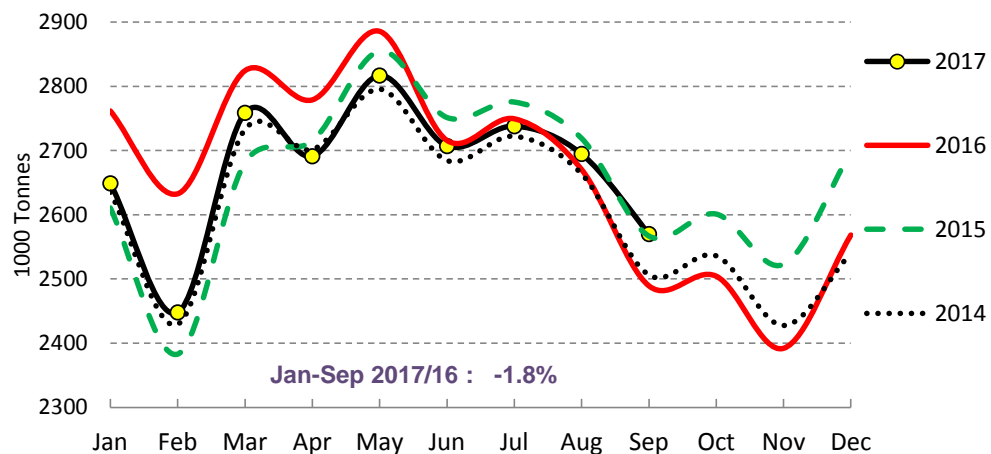


Source : EStat - Newcronos

Last update : Jan-Sep

EU Cows' milk collected - MAIN PRODUCERS (1/2)

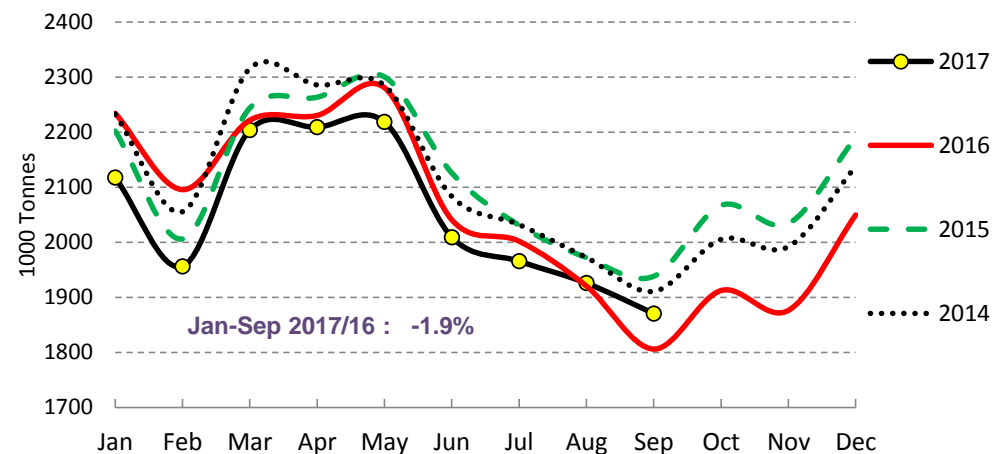
Cows' milk collected - DE



Source : Estat, Newcronos

Last update : Jan-Sep

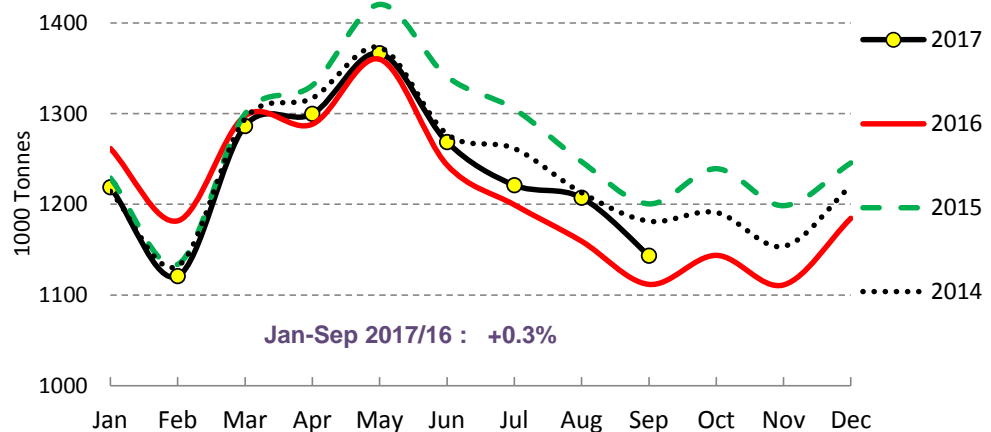
Cows' milk collected - FR



Source : Estat, Newcronos

Last update : Jan-Sep

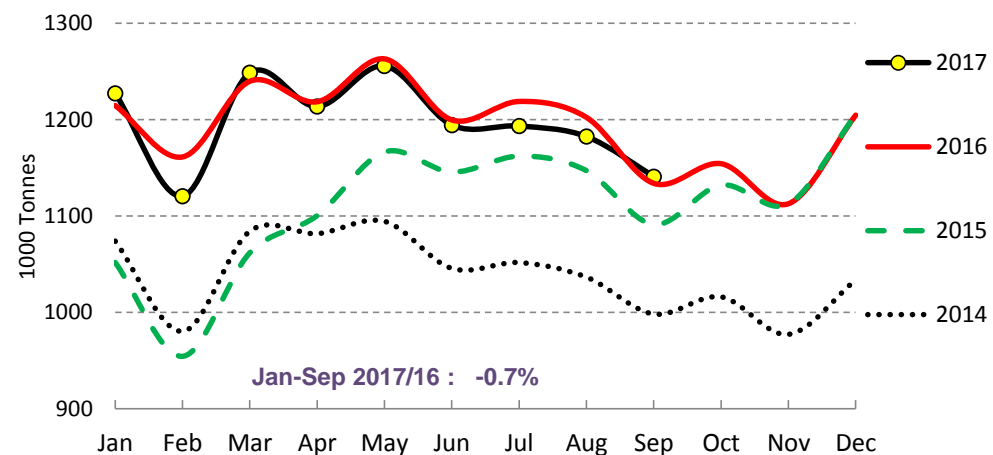
Cows' milk collected - UK



Source : Estat, Newcronos

Last update : Jan-Sep

Cows' milk collected - NL

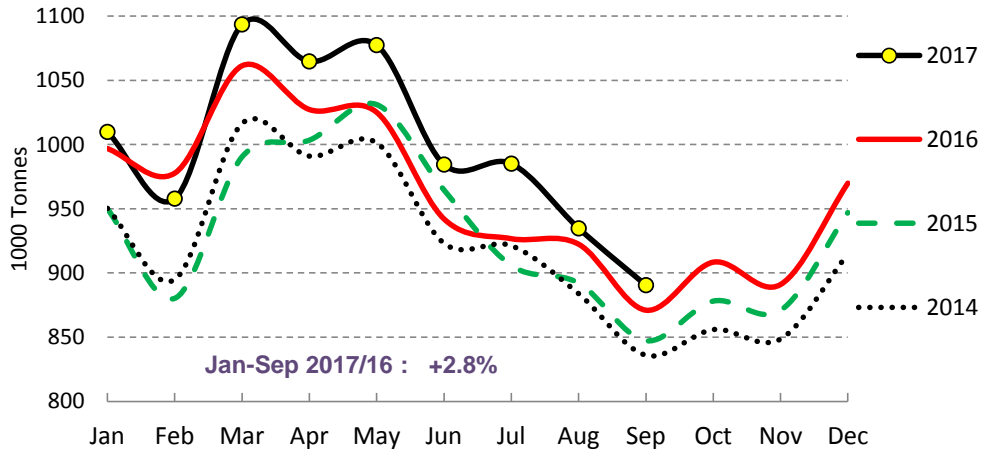


Source : Estat, Newcronos

Last update : Jan-Sep

EU Cows' milk collected - MAIN PRODUCERS (2/2)

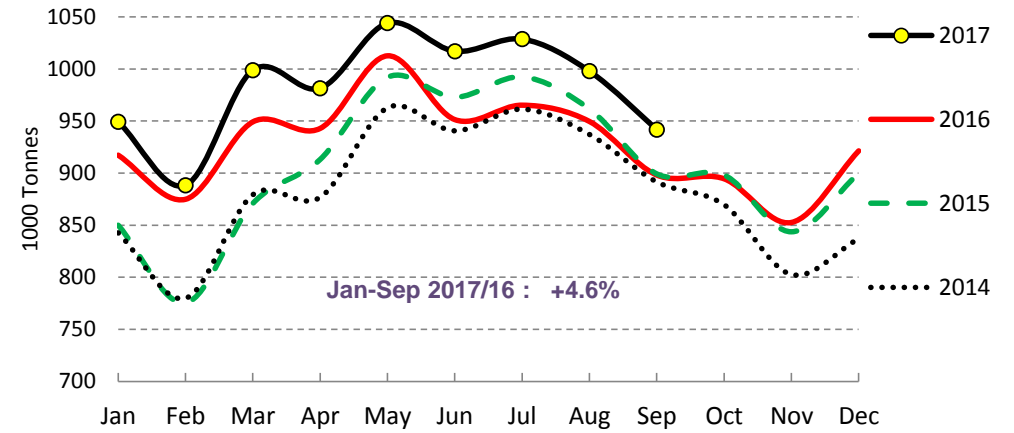
Cows' milk collected - IT



Source : Estat, Newcronos , AGEA

Last update : Jan-Sep

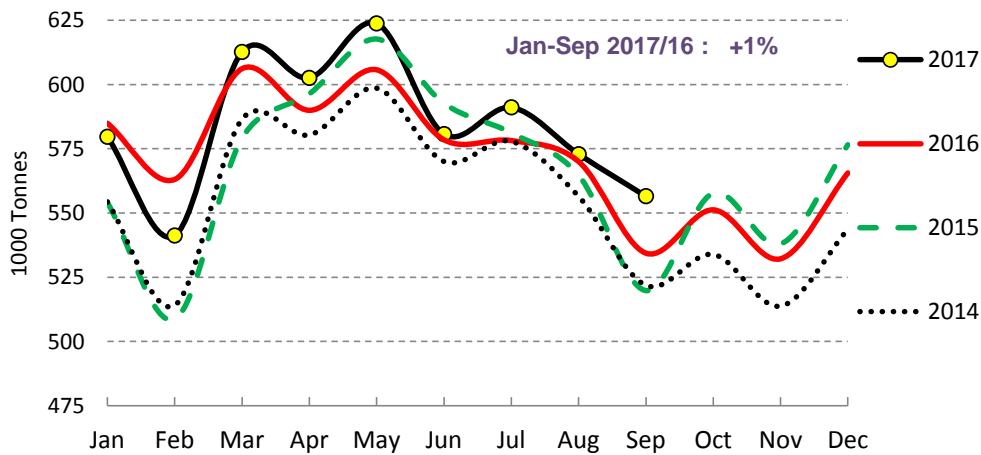
Cows' milk collected - PL



Source : Estat, Newcronos

Last update : Jan-Sep

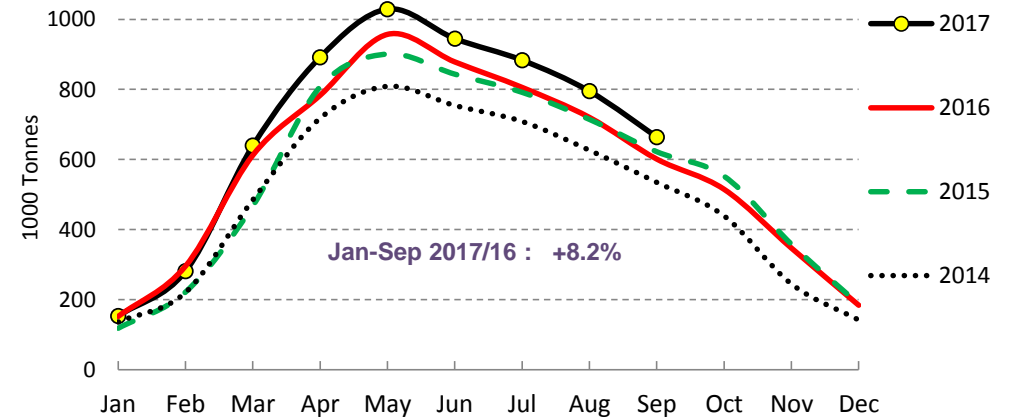
Cows' milk collected - ES



Source : Estat, Newcronos

Last update : Jan-Sep

Cows' milk collected - IE



Source : Estat, Newcronos

Last update : Jan-Sep

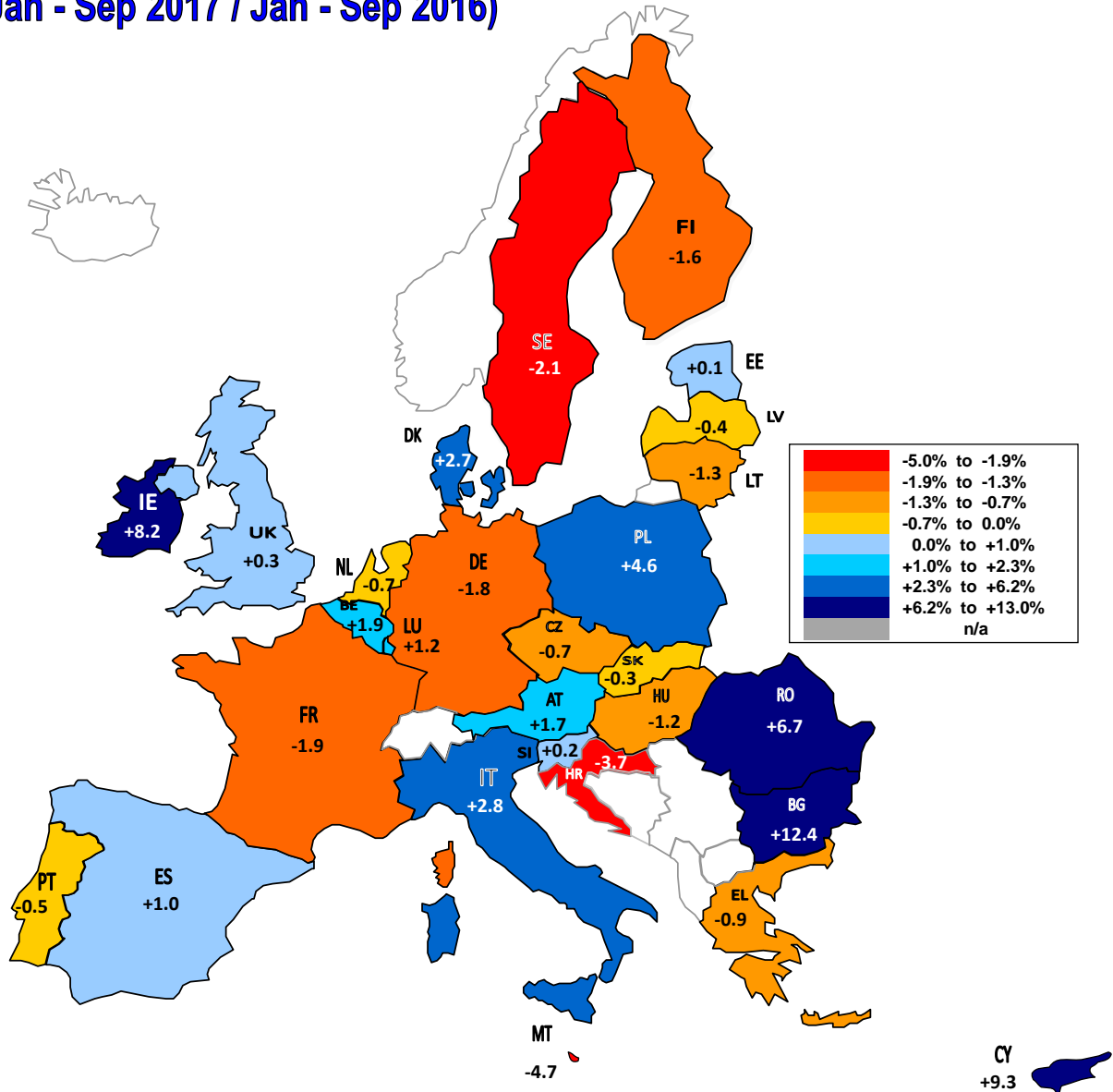
EU Cow's Milk collected

comparison of the last available month with the same month of the previous year

Sep 17 compared to Sep 16					Sep 16 compared to Sep 15					Sep 15 compared to Sep 14				
Rank	evolution in %		evolution in 1000 Tons		Rank	evolution in %		evolution in 1000 Tons		Rank	evolution in %		evolution in 1000 Tons	
	MS	%	MS	Tons		MS	%	MS	Tons		MS	%	MS	Tons
1.	BG	+ 17.0%	DE	+ 81	1.	CY	+ 16.9%	NL	+ 43	1.	IE	+ 16.4%	NL	+ 93
2.	RO	+ 11.5%	FR	+ 65	2.	MT	+ 8.5%	IT	+ 24	2.	BE	+ 10.9%	IE	+ 88
3.	IE	+ 10.4%	IE	+ 63	3.	BG	+ 6.1%	ES	+ 15	3.	LU	+ 10.5%	DE	+ 61
4.	DK	+ 9.3%	PL	+ 44	4.	NL	+ 3.9%	BG	+ 2	4.	NL	+ 9.3%	BE	+ 32
5.	LU	+ 8.8%	DK	+ 38	5.	EL	+ 3.8%	HU	+ 2	5.	SI	+ 6.4%	FR	+ 27
6.	BE	+ 8.1%	UK	+ 32	6.	IT	+ 2.8%	CY	+ 2	6.	DK	+ 6.3%	DK	+ 26
7.	AT	+ 7.0%	BE	+ 24	7.	ES	+ 2.8%	EL	+ 2	7.	CY	+ 5.4%	UK	+ 19
8.	CY	+ 5.5%	ES	+ 22	8.	HU	+ 1.9%	SI	+ 1	8.	AT	+ 4.8%	IT	+ 11
9.	PL	+ 4.9%	IT	+ 19	9.	LU	+ 1.5%	RO	+ 1	9.	CZ	+ 3.1%	AT	+ 11
10.	SK	+ 4.8%	AT	+ 16	10.	SI	+ 1.4%	LV	+ 0	10.	HU	+ 2.6%	PL	+ 8
11.	ES	+ 4.1%	RO	+ 9	11.	RO	+ 0.7%	LU	+ 0	11.	DE	+ 2.4%	CZ	+ 7
12.	EE	+ 3.6%	BG	+ 7	12.	LV	+ 0.6%	MT	+ 0	12.	FI	+ 1.9%	FI	+ 4
13.	FR	+ 3.6%	CZ	+ 7	13.	PL	- 0.1%	LT	- 0	13.	SK	+ 1.8%	HU	+ 3
14.	DE	+ 3.2%	NL	+ 7	14.	LT	- 0.2%	PL	- 1	14.	EE	+ 1.7%	SI	+ 3
15.	CZ	+ 3.1%	PT	+ 4	15.	CZ	- 1.7%	EE	- 2	15.	UK	+ 1.6%	LU	+ 3
16.	UK	+ 2.8%	SK	+ 3	16.	FI	- 1.9%	HR	- 3	16.	FR	+ 1.4%	PT	+ 1
17.	PT	+ 2.6%	LU	+ 2	17.	DE	- 3.0%	FI	- 4	17.	IT	+ 1.4%	SK	+ 1
18.	IT	+ 2.2%	EE	+ 2	18.	IE	- 3.4%	CZ	- 4	18.	HR	+ 1.0%	EE	+ 1
19.	SI	+ 1.6%	CY	+ 1	19.	EE	- 3.5%	SK	- 6	19.	PT	+ 1.0%	CY	+ 1
20.	NL	+ 0.6%	FI	+ 1	20.	AT	- 4.1%	PT	- 7	20.	PL	+ 0.9%	SE	+ 1
21.	FI	+ 0.4%	SI	+ 1	21.	SE	- 4.2%	SE	- 10	21.	SE	+ 0.2%	HR	+ 0
22.	SE	- 0.4%	HR	- 0	22.	PT	- 4.6%	AT	- 10	22.	ES	- 0.4%	MT	- 0
23.	HR	- 0.8%	MT	- 0	23.	DK	- 6.3%	IE	- 21	23.	BG	- 0.7%	BG	- 0
24.	HU	- 1.0%	SE	- 1	24.	FR	- 6.8%	DK	- 27	24.	LV	- 2.0%	LV	- 2
25.	LT	- 1.5%	HU	- 1	25.	HR	- 7.0%	BE	- 29	25.	LT	- 4.9%	ES	- 2
26.	LV	- 2.2%	LV	- 2	26.	UK	- 7.4%	DE	- 78	26.	EL	- 5.4%	EL	- 3
27.	EL	- 4.1%	EL	- 2	27.	SK	- 8.3%	UK	- 89	27.	MT	- 5.5%	LT	- 7
28.	MT	- 9.6%	LT	- 2	28.	BE	- 8.9%	FR	- 132	28.	RO	- 12.4%	RO	- 11
	EU28	+ 3.7%	EU28	+ 439		EU28	- 2.7%	EU28	- 330		EU28	+ 3.2%	EU28	+ 376

EU Milk Deliveries compared to last period (in %)

(Jan - Sep 2017 / Jan - Sep 2016)

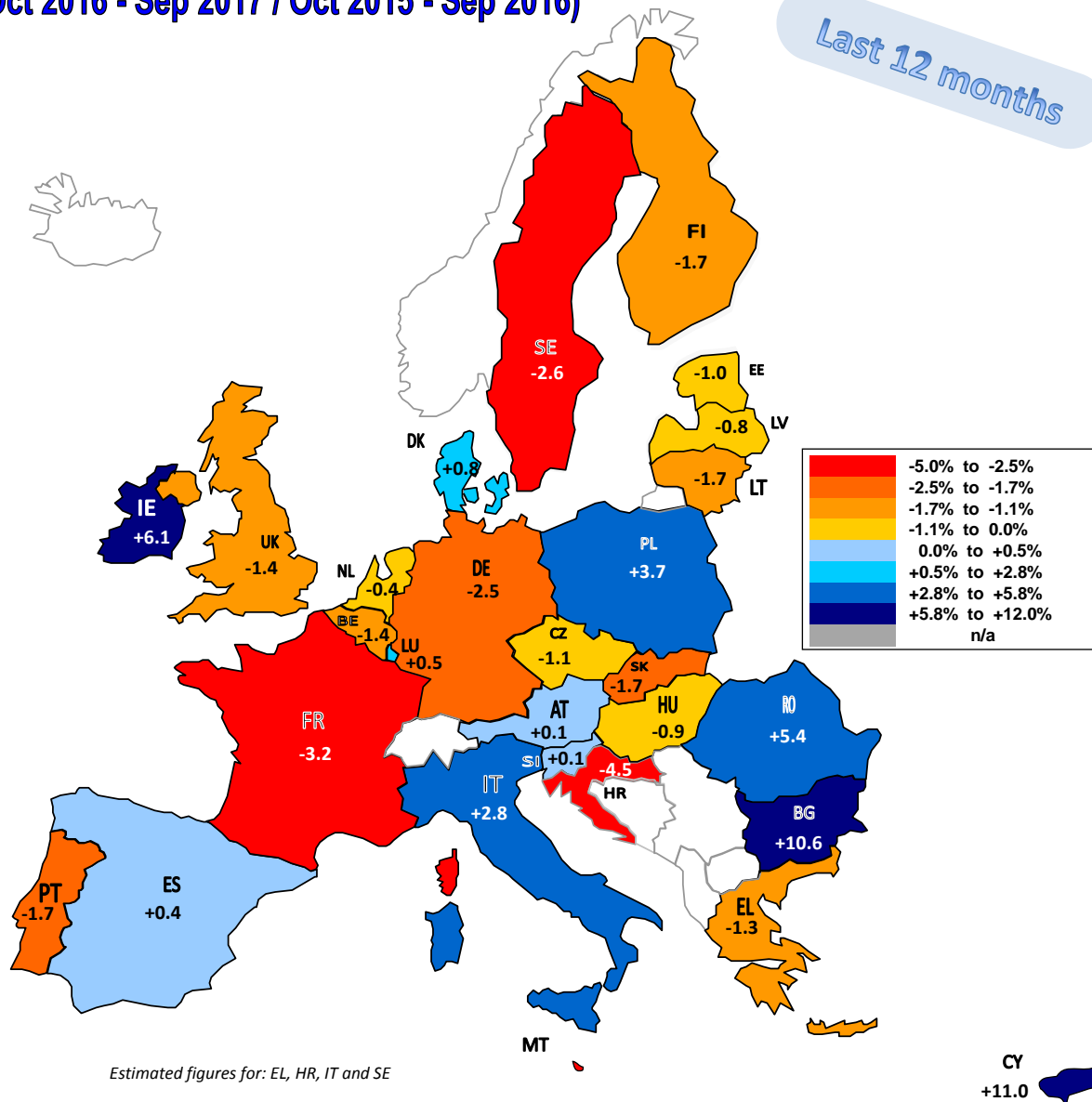


Source : MS' Communications to Eurostat, FEQA, AGEA, Reg.479/2010.1(a)1

EU Milk Deliveries compared to last period (in %)

(Oct 2016 - Sep 2017 / Oct 2015 - Sep 2016)

Last 12 months



Source : MS' Communications to Eurostat, FEQA, AGEA, Reg.479/2010.1(a)1